



**PRICE GUIDE:** \$430,000.00

Area: 926 m2

## Large Family Home With Powered Shed - 926 M2 allotment

Centrally located to all the amenities, in a quiet pocket of Rasmussen, and featuring a generously sized floor plan, this home is perfect for the large family.

With an original design of three bedrooms when built new in 1985, the home has been expanded since, with the enclosing of the original garage, and this has been used a fourth bedroom by the owners. Additionally there is a large rear family room and a back patio.

With added the benefit of a the large powered shed to the back of the property and rear gates to the park at the back, the home offers the opportunity for a buyer to modernise whilst they live in the home.

### THE PROPERTY

- 3 Bedrooms enclosed]
- 926 sqm. block with double gate back acces



**Nathan Lynham**  
0427 695 162

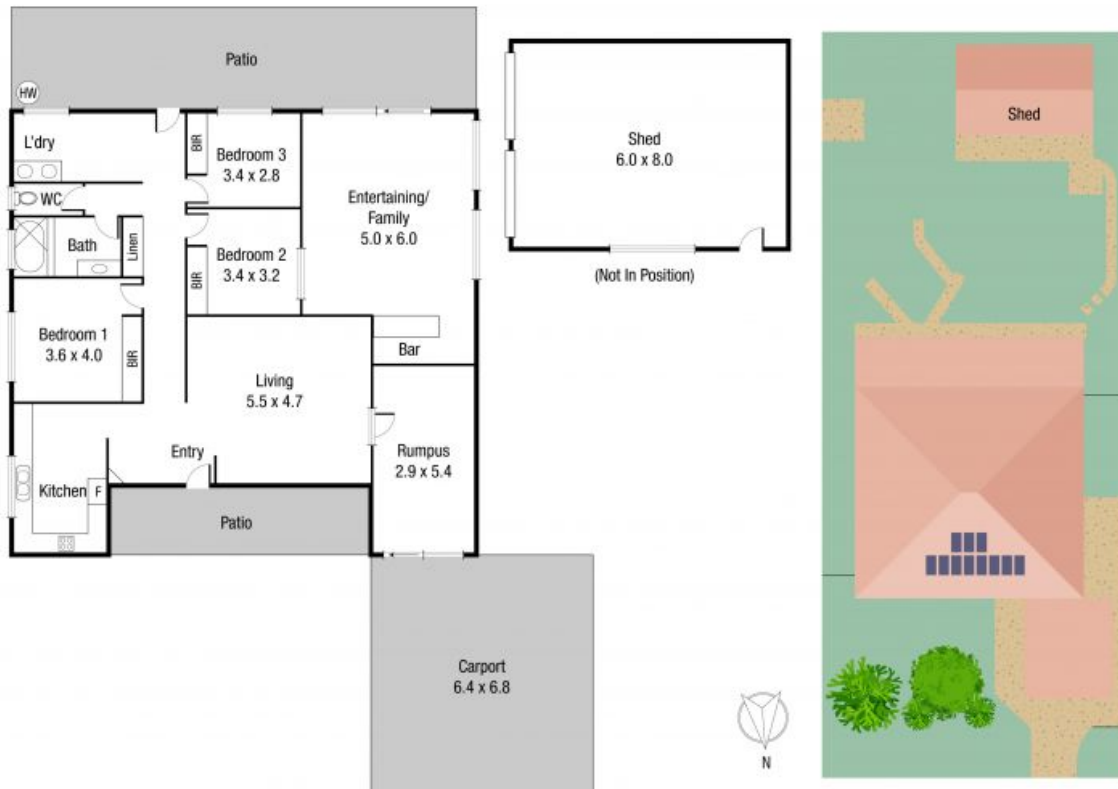


**Graham Lynham**  
0447 250 222



**OFFICE**

37Thuringowa Drive, Kirwan  
**07 4723 3222**



Scale in metres. Indicative only. Dimensions are approximate. All information contained herein is gathered from sources we believe to be reliable. However we cannot guarantee its accuracy and interested persons should rely on their own enquiries.

TOTAL AREA : 255.2 sq.m

25 Meryll St, Rasmussen