



PRICE GUIDE: \$320,000.00

Area: 809 m2

Highset home with long-term tenant \$360 pw to August 2024

Located just minutes from the expanding Fairfield Waters Shopping Centre, in one of Townsville's most popular suburbs, this highset home with long-term tenants in place would suit the investor.

Featuring three bedrooms, a functional kitchen and bathroom, and open-plan living and dining, the home represents an original example of a popular high-set design synonymous with the suburb.

Underneath the home is partially enclosed and with laundry and room for car accommodation.

The roof was replaced in recent years.

The home sits on a fully fenced 809 m2.

Located only 600 m2 from the Wulguru State Primary School, and a short drive the every convenience family would need, the house repres



Nathan Lynham
0427 695 162

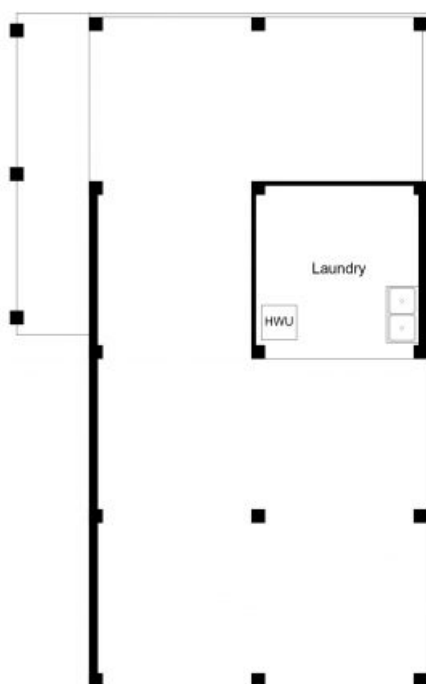


Graham Lynham
0447 250 222



OFFICE

37Thuringowa Drive, Kirwan
07 4723 3222



LOWER
FLOOR PLAN



UPPER
FLOOR PLAN

This floor plan including furniture, fixture measurements and dimensions are approximate and for illustrative purposes only.
BoxBrownie.com gives no guarantee, warranty or representation as to the accuracy and layout.
All enquiries must be directed to the agent, vendor or party representing this floor plan.