



PRICE GUIDE: \$793,000.00

Area: 809 m2

Sold by Graham Shelly and Nathan Lynham

Offering a tranquil setting, within a highly enviable location, this beautifully maintained low-set home is ready for a new family to move in and make it their own.

Built in the 1950's, the home was then renovated in the early 1990's to expand the living area significantly, with a focus on preserving the character of the home.

Arriving at the home you are met with the traditional front patio, which faces eastward and enjoys the prevailing sea breezes and shaded afternoons all year round.

Inside the main entrance, the main family/dining area boasts polished timber floors, high ceilings, and ample space for entertaining.

The home has been fully repainted internally in light modern tones enhancing the natural light and spaciousness under the high ceiling



Graham Lynham
0447 250 222

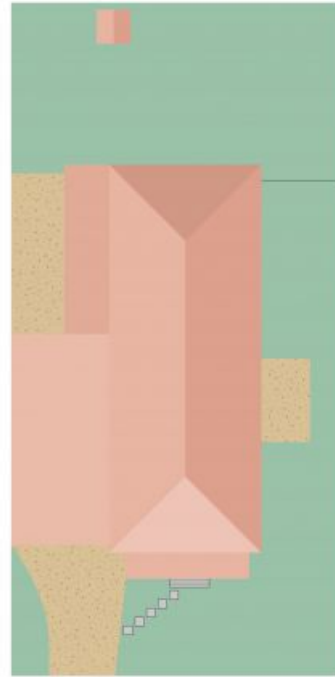
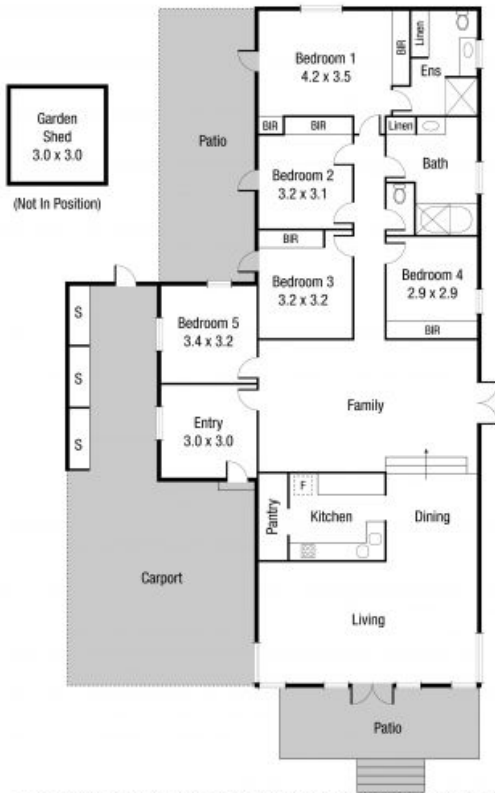


Nathan Lynham
0427 695 162



OFFICE

37Thuringowa Drive, Kirwan
07 4723 3222



Scale in metres. Indicative only. Dimensions are approximate. All information contained herein is gathered from sources we believe to be reliable. However we cannot guarantee its accuracy and interested persons should rely on their own enquiries.

TOTAL AREA : 285.1 sq.m

38 Stanton St, Belgian Gardens