



PRICE GUIDE: \$435,000.00

Area: 320 m2

Council Rates: \$3,950.00 p.q.

Contemporary Cottage within Riverside Gardens

Immaculately presented, this quality three-bedroom home situated in a quiet court in the highly sought-after suburb of Douglas is sure to impress.

Perfect for the first home buyer or investor an opportunity awaits to purchase a home that has been meticulously maintained and is within close proximity to the Hospital, University and Lavarack Barracks.

Open plan living with a modern kitchen and living situated to the rear of the home and overlooking the low maintenance block.

The Property

- Three air-conditioned bedrooms with built-ins
- Main bedroom with walk-in robe and ensuite
- Modern kitchen
- Functional floorplan
- Tiled living areas
- Freshly painted in the last 12 months



Shelly Lynham
0414 250 166

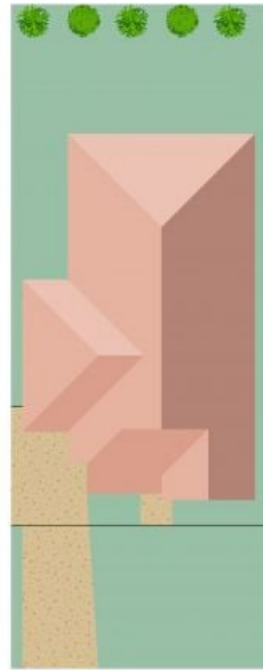


Graham Lynham
0447 250 222



OFFICE

37Thuringowa Drive, Kirwan
07 4723 3222



Scale in metres. Indicative only. Dimensions are approximate. All information contained herein is gathered from sources we believe to be reliable. However we cannot guarantee its accuracy and interested persons should rely on their own enquiries.

TOTAL AREA : 144.3 sq.m

12 Calliope Cl, Douglas