



PRICE GUIDE: \$460,000.00

Area: 420 m2

Under Contract By Shelly Lynham 0414250166

Located in Shaw, one of Townsville's newest estates, and a little over 6 years of age, this well-presented home represents a rare opportunity for owner-occupiers and investors alike.

Featuring modern tones, a functional design that takes advantage of the low maintenance 420sqm allotment, and four bedrooms, with the master feature ensuite & walk-in wardrobe, the home is currently vacant and ready to occupy.

THE PROPERTY

- Four air-conditioned bedrooms with built-in wardrobes
- Main bedroom with walk-in wardrobe and ensuite
- Functional modern layout and colours
- Modern kitchen with stone benchtops
- Main bathroom with shower, bathtub and separate toilet
- Fully air-conditioned throughout
- Study nook



Shelly Lynham
0414 250 166

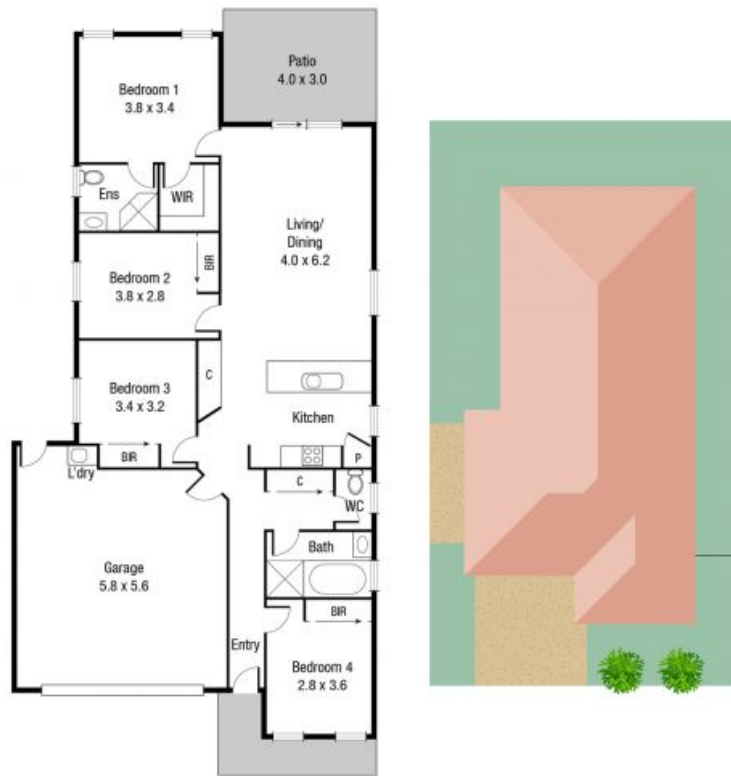


Graham Lynham
0447 250 222



OFFICE

37Thuringowa Drive, Kirwan
07 4723 3222



Scale in metres. Indicative only. Dimensions are approximate. All information contained herein is gathered from sources we believe to be reliable. However we cannot guarantee its accuracy and interested persons should rely on their own enquiries.

TOTAL AREA : 155.5 sq.m

12 Cranbourne