



**PRICE GUIDE:** \$505,000.00

Area: 527 m2

### Under Contract By Shelly Lynham 0414250166

Nestled in the heart of the highly sought-after Kirwan neighbourhood, 6 Cobold Court presents an exceptional opportunity to own a residence that embodies both elegance and modern comfort. With a striking design and meticulous attention to detail, this property offers an unparalleled lifestyle for discerning buyers.

This property offers a unique blend of elegance and functionality, making it perfect for families and couples alike with the added benefit of an in-ground pool, spa & shed.

#### THE PROPERTY

- Two living areas
- Three generous-sized bedrooms
- Fully air-conditioned
- Internal laundry
- Functional layout
- Inground pool



**Shelly Lynham**  
0414 250 166

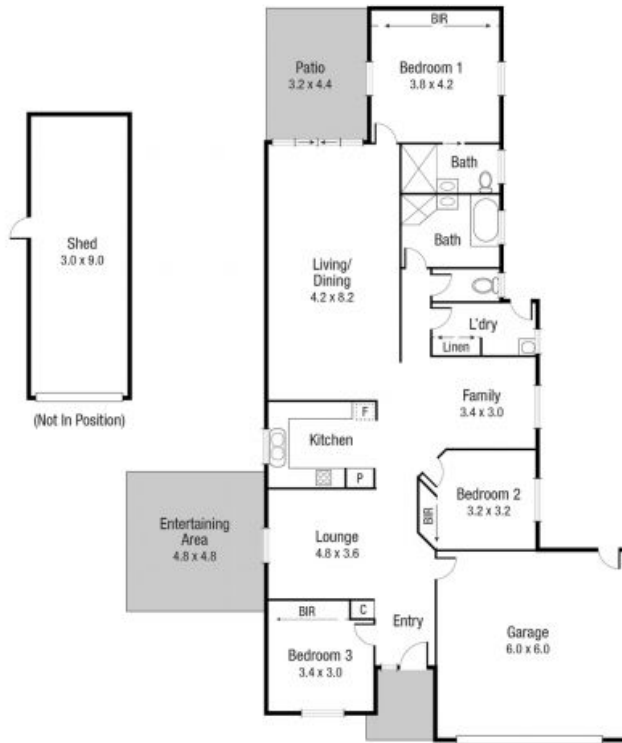


**Graham Lynham**  
0447 250 222



**OFFICE**

37Thuringowa Drive, Kirwan  
**07 4723 3222**



Scale in metres. Indicative only. Dimensions are approximate. All information contained herein is gathered from sources we believe to be reliable. However we cannot guarantee its accuracy and interested persons should rely on their own enquiries.

TOTAL AREA : 230.82 sq.m

6 Cobold