



PRICE GUIDE: \$450,000.00

Area: 2.14 m2

Home on 5 acres with pool and shed ready for makeover

Nestled in the tightly held rural residential suburb of Oak Valley, towards the rear of the suburb, in the foothills, this distinctive home offers arguably Townsville's most affordable acreage opportunity.

Built with an unmistakable European flair by its first owners, the home, which is in original condition, sits in the middle of the block.

It's fair to say the home requires some TLC, but its new owners will be able to move straight in and set about refreshing the property in manner that suits their needs.

This is not just any home but a uniquely designed two-bedroom home.

Entertainment areas abound on two sides while



Graham Lynham
0447 250 222

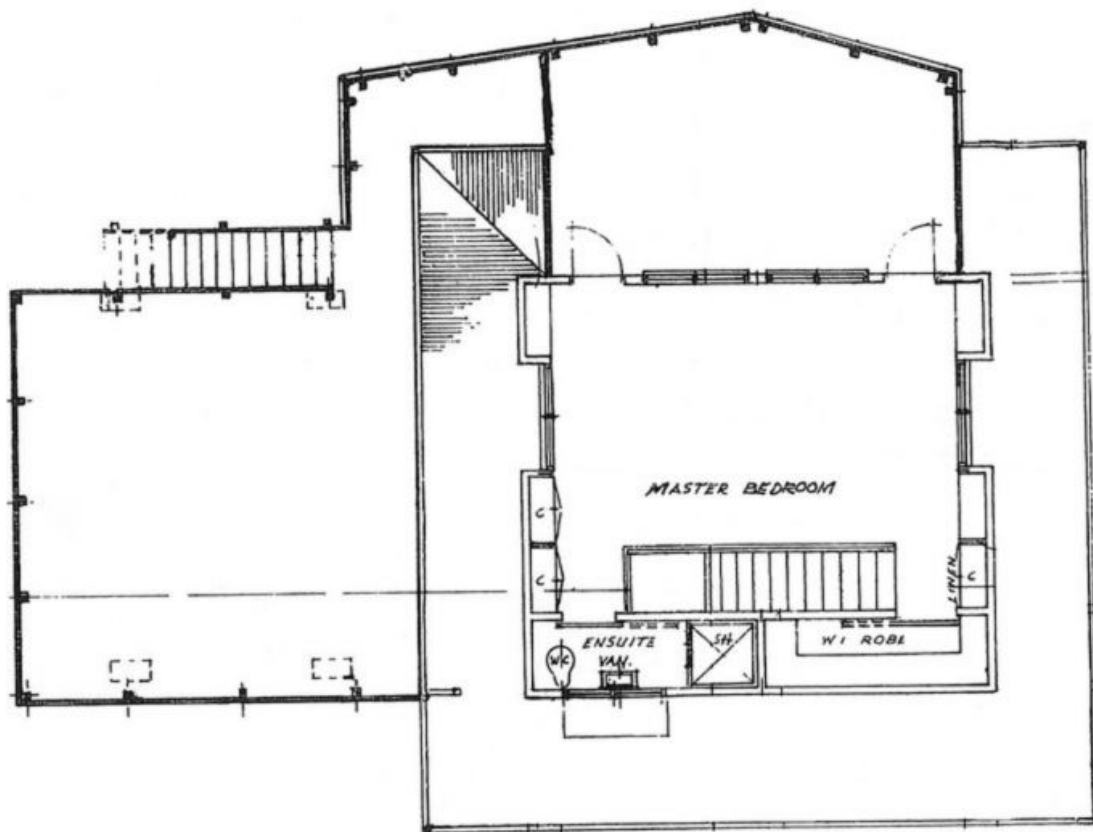


Shelly Lynham
0414 250 166



OFFICE

37 Thuringowa Drive, Kirwan
07 4723 3222



UPPER FLOOR PLAN