



PRICE GUIDE: \$365,000.00

Area: 494 m2
Council Rates: \$4,042.48

Sold By Nathan Lynham 0427695162

Escape to your perfect summer oasis at 52 Elphinstone Drive, Kirwan!

Nestled in The Avenues, this charming 3-bedroom home promises delightful weekends spent on your patio, sipping cold drinks and embracing the summer vibes.

Convenience is at your fingertips, with Shopping Centres, Schools, The Avenues Tavern, and various amenities just moments away.

Step inside and be greeted by comfort and practicality.

Don't miss out on this fantastic opportunity to make this house your new home. Embrace the warmth of summer and seize the chance to own your dream retreat!

THE PROPERTY

- Double garage
- A stone's throw to newly built daycare 'Gr



Nathan Lynham
0427 695 162

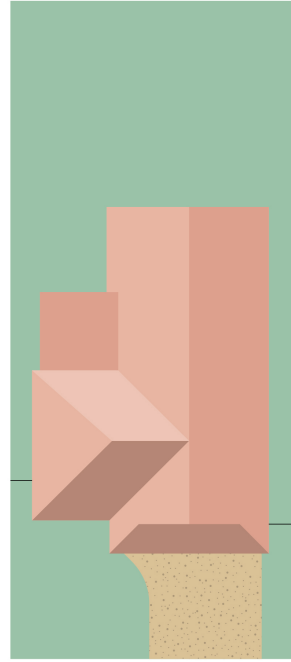
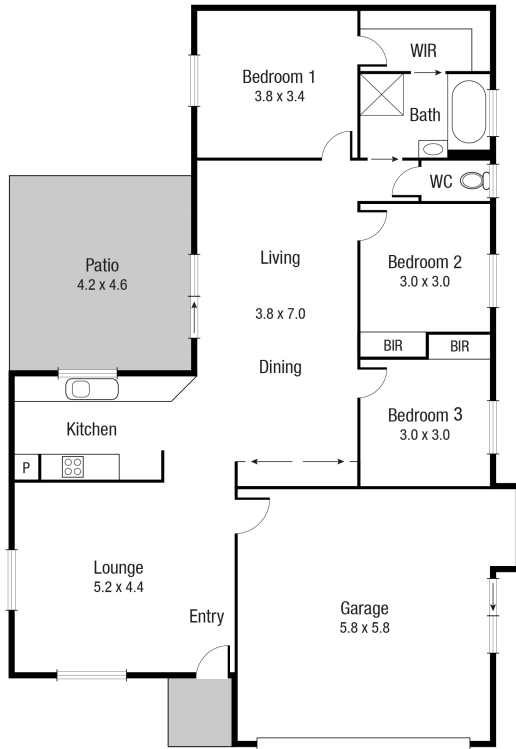


Graham Lynham
0447 250 222



OFFICE

37Thuringowa Drive, Kirwan
07 4723 3222



Scale in metres. Indicative only. Dimensions are approximate. All information contained herein is gathered from sources we believe to be reliable. However we cannot guarantee its accuracy and interested persons should rely on their own enquiries.

TOTAL AREA : 168.3 sq.m

52 Elphinstone