



PRICE GUIDE: \$400,000.00

Area: 737 m2

Council Rates: \$3,605.46 p.q.

Under Contract By Nathan Lynham 0427695162

This impressive low-set home offers a spacious and comfortable living experience. Boasting 4 bedrooms, 2 bathrooms, and a 2-car garage, this property is ideal for families seeking both style and convenience. Situated on a 737 sqm corner block, this residence presents a wonderful opportunity to establish your dream home with the added benefit of a lush backyard & shed.

THE PROPERTY

- 4 spacious bedrooms with built-in wardrobes
- Master bedroom features walk-in wardrobe & private ensuite
- Generously sized galley kitchen with ample bench space & storage
- Open-plan lounge and dining space
- Fully tiled dining and lounge room
- Additional living/lounge space to the front
- Modern-style bathroom with shower, bathtub and separate toilet
- Internal laundry with direct external access
- Large outdoor entertaining area
- Fully fenced with side access
- Lusciously landscaped backyard with 3x3.4m



Nathan Lynham
0427 695 162

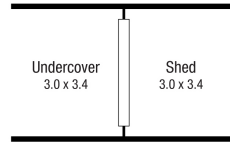
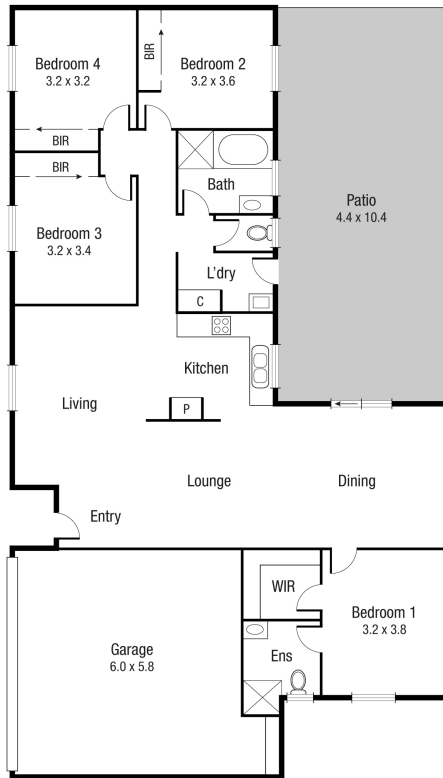


Graham Lynham
0447 250 222

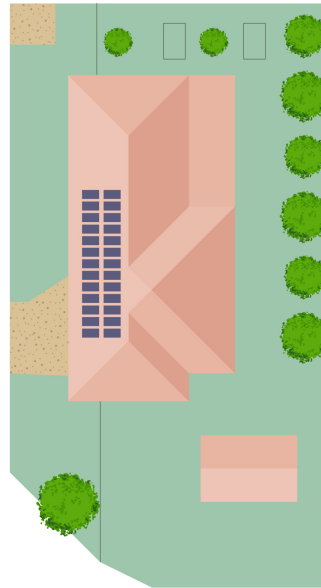


OFFICE

37Thuringowa Drive, Kirwan
07 4723 3222



(Not In Position)



Scale in metres. Indicative only. Dimensions are approximate. All information contained herein is gathered from sources we believe to be reliable. However we cannot guarantee its accuracy and interested persons should rely on their own enquiries.

TOTAL AREA : 219.4 sq.m

1 Millie Ct, Kelso