



PRICE GUIDE: \$630,000.00

Area: 1028 m2

**Under Contract By Shelly and Graham Lynham
0414250166**

Seldom does a home with a mix of features and presentation come to the market in the Kirwan area.

Set on a generous 1028 metre square allotment, and only minutes to the Willows Shopping Centre, Cannon Park, and Riverway, the large 5-bedroom design offers every unique opportunity for a growing family.

Renovated in the last 5 years, and planned with "family" at its core, the home impresses from the time you arrive.

After being met by manicured lawns, the home's appeal is obvious from the first view.

Once inside the scope of the bespoke renovation is clearly apparent.

Highlights are the light earthy tones, and m



Shelly Lynham
0414 250 166

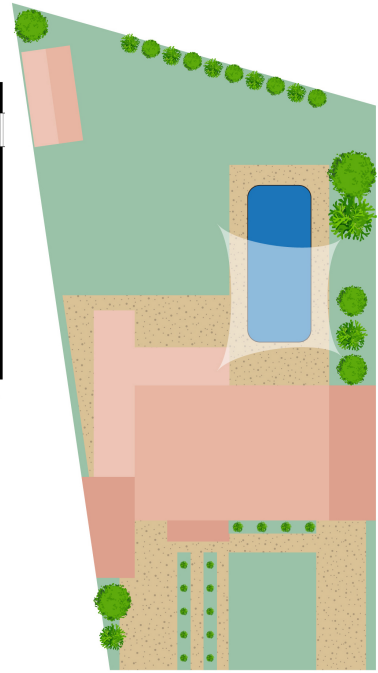
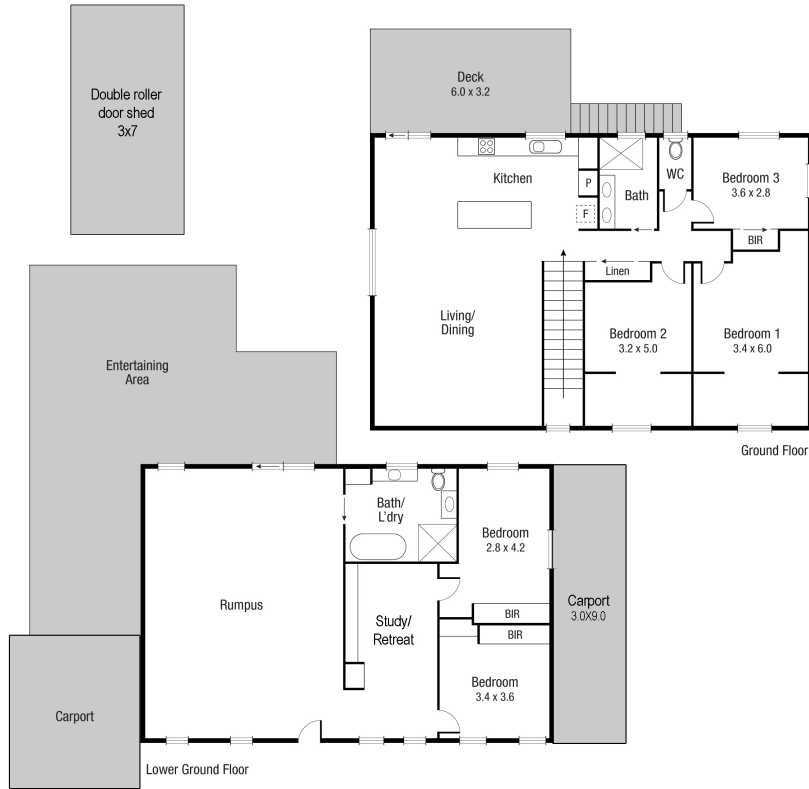


Graham Lynham
0447 250 222



OFFICE

37Thuringowa Drive, Kirwan
07 4723 3222



Scale in metres. Indicative only. Dimensions are approximate. All information contained herein is gathered from sources we believe to be reliable. However we cannot guarantee its accuracy and interested persons should rely on their own enquiries.

TOTAL AREA : 190.4 sq.m

77 Tam O'shanter Dr, Thuringowa Central