



Lynham



Lynham



Lynham



PRICE GUIDE: \$420 Per Week

Area: 1012 m2

### Perfectly positioned Queenslander on 1012 m2

\*\*\* PROPERTY IS BEING LEASED UNTIL THE END OF FEBRUARY 2024

Located on a large fully fenced and secured block this two-bedroom family home has plenty of room for the kids to play and is located only minutes from the local shops, schools and transport.

#### THE PROPERTY

- Highset home with an east-facing aspect
- High ceilings
- Tongue and groove walls?
- Polished timber floors
- Two bedrooms with an opportunity to be converted to three
- Breezeway/ sleepout
- Enclosed under with internal back stairs
- Large 1012m2 fully fenced block which captures the sea breezes
- Lawn service included
- Moments to Queensland Country Bank Stadium



Lynham & Co.  
RENTALS

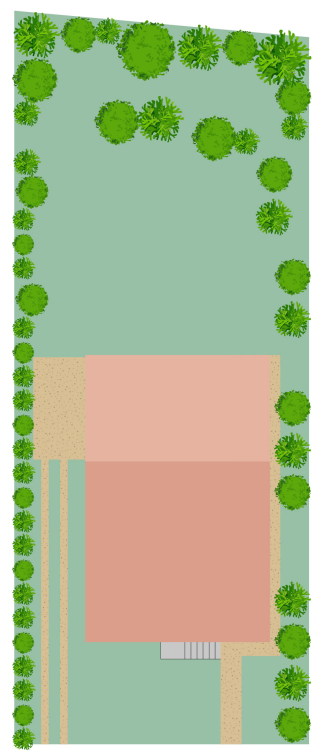
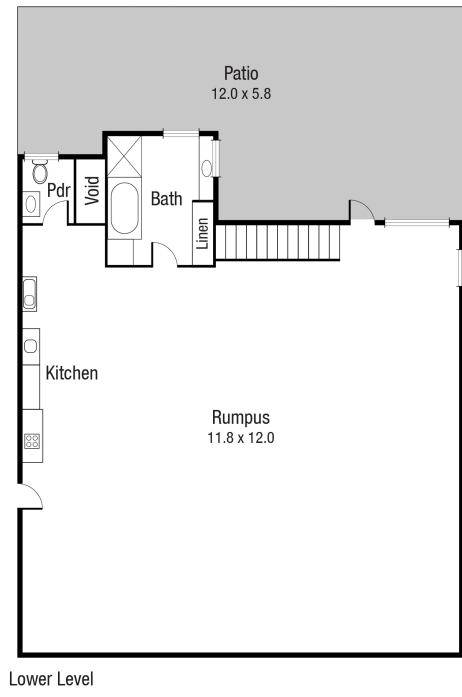
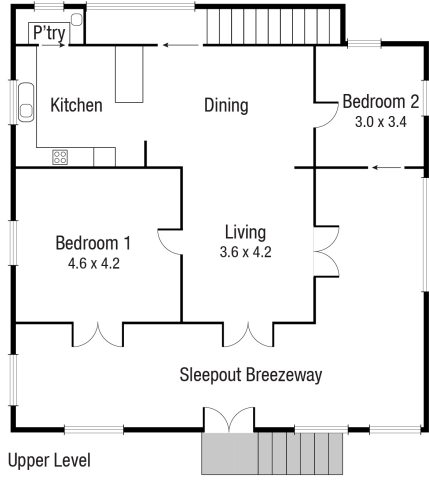


Lynham & Co. Rental



OFFICE

37 Thuringowa Drive, Kirwan  
07 4723 3222



Scale in metres. Indicative only. Dimensions are approximate. All information contained herein is gathered from sources we believe to be reliable. However we cannot guarantee its accuracy and interested persons should rely on their own enquiries.

**TOTAL AREA : 334.7 sq.m**

**20 Hubert St, South Townsville**