



PRICE GUIDE: \$395,000.00

Area: 457 m2

Council Rates: \$3,576.94 p.q.

Under Contract By Nathan Lynham 0427695162

Beyond the beauty of its inescapable Queensland heritage, within the walls of this stunningly crafted home sits a raft of unparalleled contemporary interiors.

Presenting as a new home, it's a blend of old meets new.

It flows seemingly from the moment you enter the door.

Under high ceilings, the four bedrooms, including a generous-sized master with a stunning ensuite and walk-in robe, are enhanced by subtle tones and project a traditional presence that's warm and inviting.

With so much to offer, and with owners who planned the home meticulously to the finest detail, its true appeal is in the overall offering, with each element of the building construction executed more like a craftsman than a



Nathan Lynham
0427 695 162

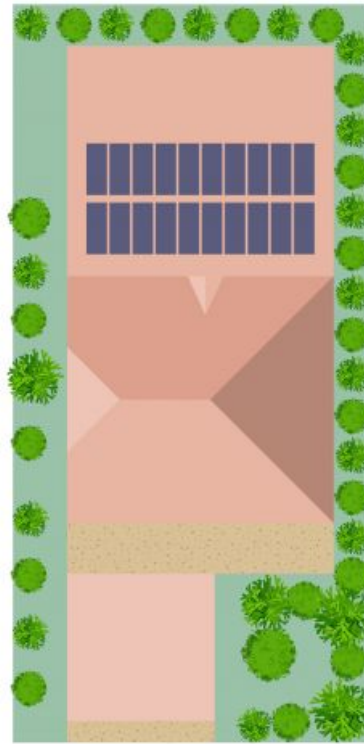


Graham Lynham
0447 250 222



OFFICE

37Thuringowa Drive, Kirwan
07 4723 3222



Scale in metres. Indicative only. Dimensions are approximate. All information contained herein is gathered from sources we believe to be reliable. However we cannot guarantee its accuracy and interested persons should rely on their own enquiries.

TOTAL AREA : 201.2 sq.m

17 Sanderling Cct, Kelso