



PRICE GUIDE: \$520,000.00

Area: 1012 m2

Under Contract By Shelly Lynham 0414250166

Located in one of Townsville's most sought-after suburbs, this highset timber home represents one of the best examples of its era currently available on the market.

Brimming with possibilities, boasting a wide street frontage, and a design very true to how it was built to take advantage of the sea breezes, this expansive 1012 m2 property represents an opportunity to purchase one of South Townsville's timeless designs.

Positioned in what is fast becoming blue-chip streets, as homes are being renovated to bespoke standards, it offers scope to occupy and then renovate over time. The possibilities are limited only by the new owner's imagination.

THE PROPERTY

- Highset home with an east-facing aspect
- High ceilings
- Tongue and groove walls
- Two bedrooms with an opportunity to be converted



Shelly Lynham
0414 250 166

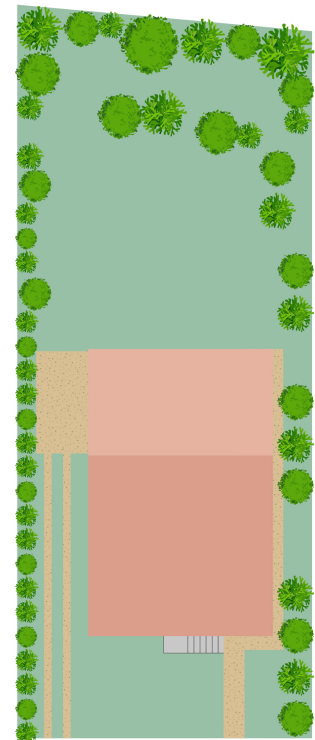
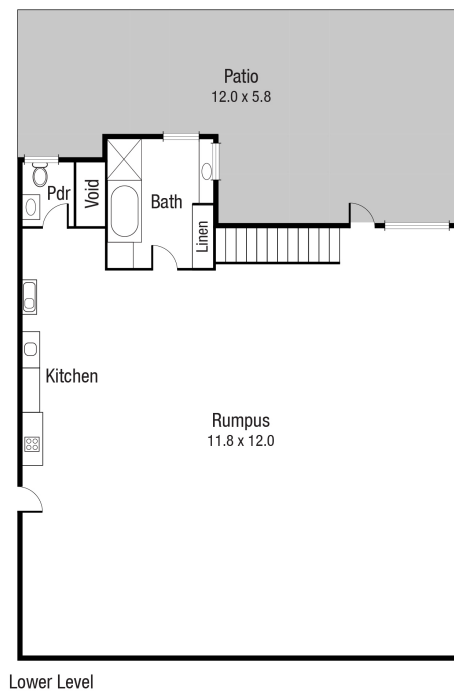
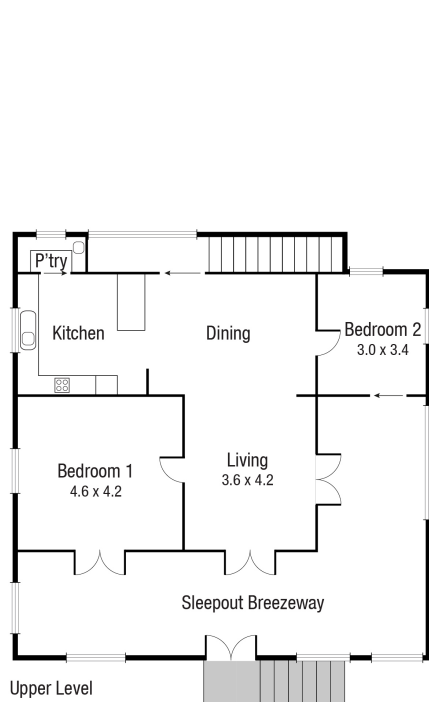


Graham Lynham
0447 250 222



OFFICE

37 Thuringowa Drive, Kirwan
07 4723 3222



Scale in metres. Indicative only. Dimensions are approximate. All information contained herein is gathered from sources we believe to be reliable. However we cannot guarantee its accuracy and interested persons should rely on their own enquiries.

TOTAL AREA : 334.7 sq.m

20 Hubert St, South Townsville