



**PRICE GUIDE:** \$650,000.00

Area: 809 m2

Council Rates: \$4,455.36 p.q.

## Under Offer By Graham & Nathan Lynham 0427695162

Combining modern luxury and Queenslander-style living, this fully renovated home has been bought back to life with attention to detail and craftsmanship of the highest standard.

The outcome is simply amazing.

?

The functional floor plan is designed with the family at the heart of the home.

A modern black and white kitchen, with stone bench tops and quality appliances and fittings, sits at the centre of the home and has been positioned with entertaining in mind.

The kitchen overlooks the open-plan living and dining rooms. ?

?

An additional 3 three bedrooms complete the floor plan, with bedrooms two and three being of a very generous size. Bedroom 4 offers a



**Nathan Lynham**  
0427 695 162

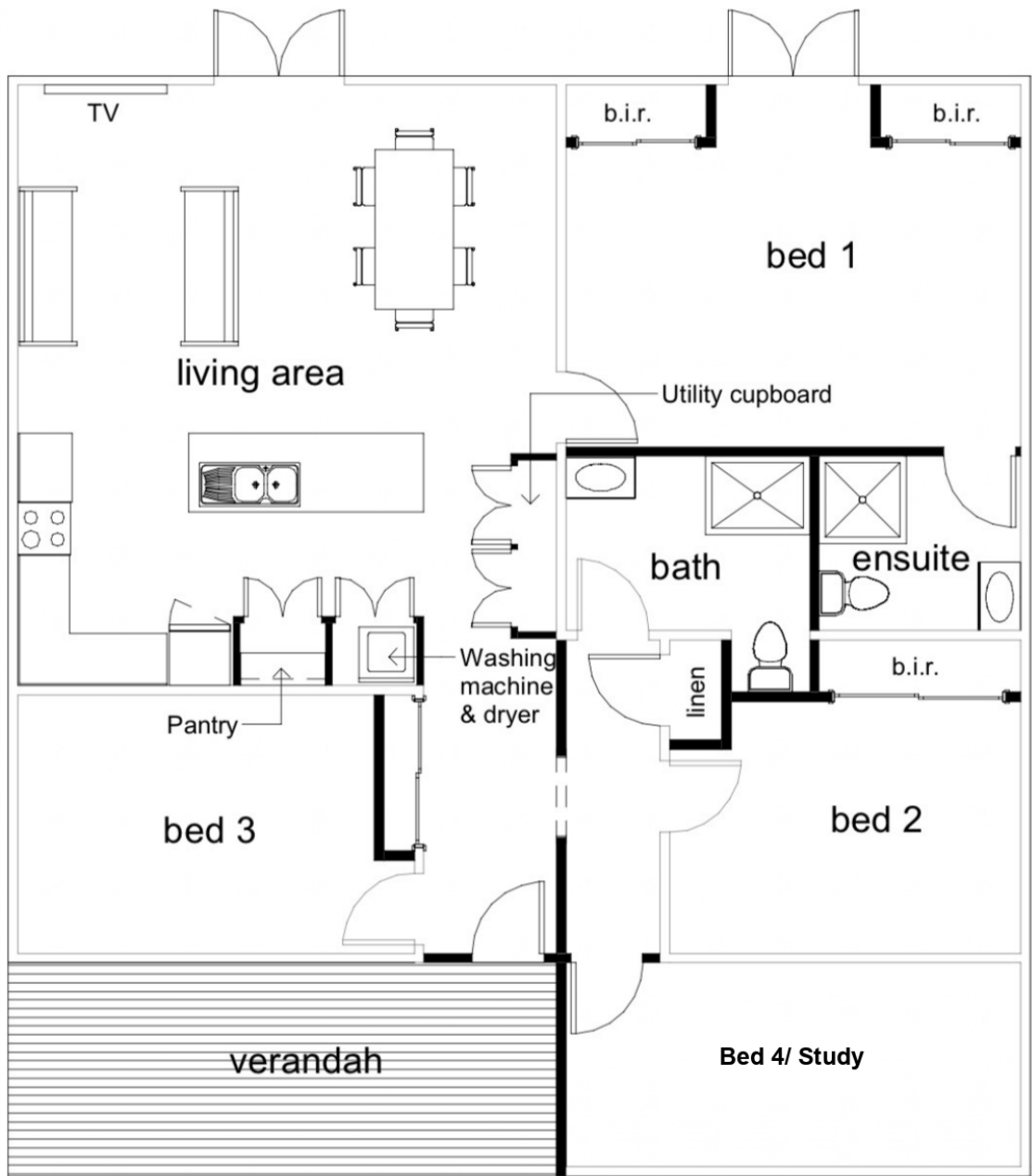


**Graham Lynham**  
0447 250 222



**OFFICE**

37Thuringowa Drive, Kirwan  
**07 4723 3222**



|| || || || || || || ||