



PRICE GUIDE: Under Contract By Shelly Lynham
0414250166

Area: 4004 m2
Council Rates: \$3,550.00 p.q.

Sold by Shelly and Graham Lynham

Set on a generous 4004 m2 corner allotment, with dual street access, this beautifully presented generously sized brick veneer two-bedroom home offers scope to re-imagine as three bedrooms, or extend, which the current owner had planned.

Freshly painted internally, and with new carpets installed, this is functionally designed to take advantage of the large allotment, the home also features a large undercover patio, perfectly positioned to overlook the yard and provide room to relax in the afternoons.

With access to shops, schools and the Ring Road only a short drive away, this home offers the benefit of rural living close to all amenities and is perfect for those seeking space with peace & quiet.

THE PROPERTY

- 2 bedrooms with built-in robes - mirrored robes to the main bedroom
- Large family/living room
- Split system air conditioners throughout a



Shelly Lynham
0414 250 166

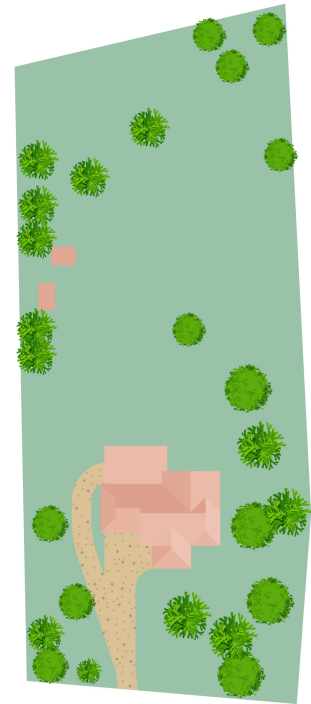
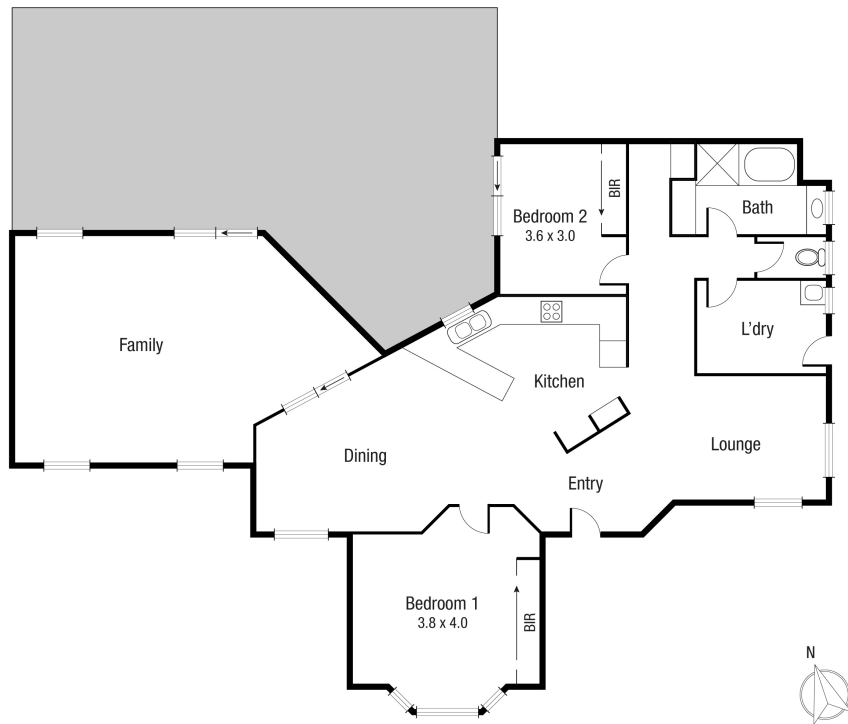


Graham Lynham
0447 250 222



OFFICE

37Thuringowa Drive, Kirwan
07 4723 3222



Scale in metres. Indicative only. Dimensions are approximate. All information contained herein is gathered from sources we believe to be reliable. However we cannot guarantee its accuracy and interested persons should rely on their own enquiries.

TOTAL AREA : 210.3 sq.m

29 Shetland Pl, Kelso