



PRICE GUIDE: \$295,000.00

Area: 450 m2

Council Rates: \$3,376.40 p.q.

Under Contract By Nathan Lynham 0427695162

With an emphasis on comfort, ease and relaxation, this single-level low maintenance home, boasts a fresh & open plan living. Just minutes from shops, schools and other amenities, this home in a highly sought-after location is bound to leave a lasting impression.

THE PROPERTY

- Freshly repainted internally
- 3 large bedrooms with new flooring
- Main bedroom with built-in wardrobe & access to the two-way bathroom
- Study/office to the front of the property
- Modern galley-style kitchen with direct access to carport
- Large main bathroom with shower, bath & separate toilet
- Internal laundry with direct external access
- Covered patio area
- Solar system
- Single remote carport with drive-through access to the rear yard
- Fully fenced yard with side gates
- Close proximity to Kelso State School and



Nathan Lynham
0427 695 162

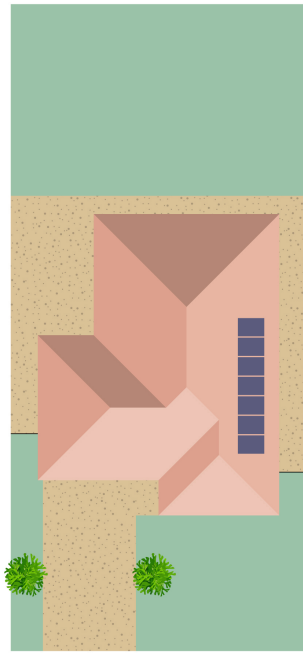
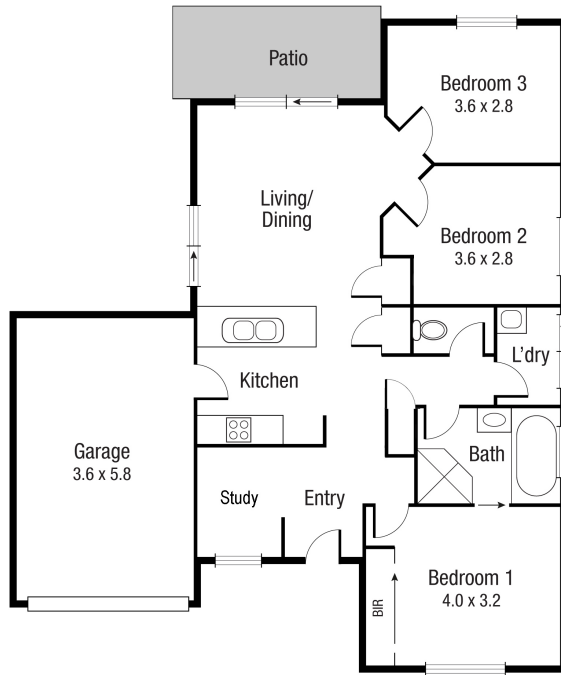


Graham Lynham
0447 250 222



OFFICE

37Thuringowa Drive, Kirwan
07 4723 3222



Scale in metres. Indicative only. Dimensions are approximate. All information contained herein is gathered from sources we believe to be reliable. However we cannot guarantee its accuracy and interested persons should rely on their own enquiries.

TOTAL AREA : 122.56 sq.m

54D Dunlop St, Kelso