



PRICE GUIDE: \$680,000.00

Area: 700 m2

Sold By Graham & Nathan Lynham 0427695162

Graham, Shelly and Nathan Lynham proudly present 9 Regal Court, Kirwan - the complete family home.

Located in one of Kirwan's Premium enclaves, this generously sized bespoke designed executive home on a 700 m2 allotment offers a very unique opportunity for family living.

Designed to take perfect advantage of the tree-lined streets and community feel, and just 100m from Willows Golf Course fairways, the home offers unrivalled space for a large family, in a highly sought-after location, surrounded by similar high-standard homes in a tranquil setting opposite "Regal Park".

On the upper level of the home are the four large bedrooms, with the master featuring a large ensuite with a spa and walk-in wardrobe.



Nathan Lynham
0427 695 162

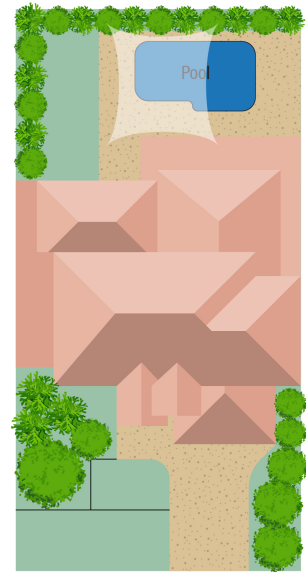
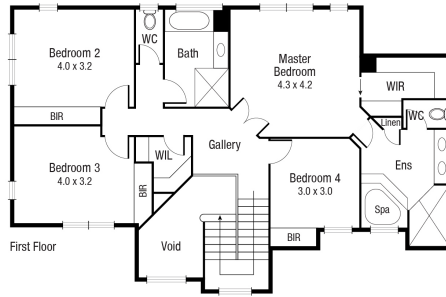
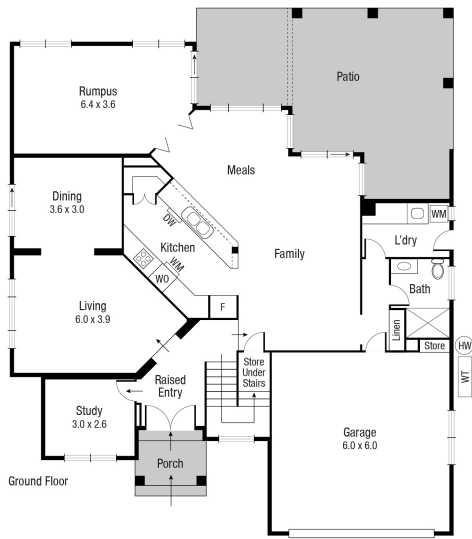


Graham Lynham
0447 250 222



OFFICE

37Thuringowa Drive, Kirwan
07 4723 3222



Scale in metres. Indicative only. Dimensions are approximate. All information contained herein is gathered from sources we believe to be reliable. However we cannot guarantee its accuracy and interested persons should rely on their own enquiries.

TOTAL AREA : 356.96 sq.m

9 Regal