



Lynham



Lynham



Lynham



Lynham



PRICE GUIDE: \$600 Per Week

Area: 607 m2

Looks Can Be Deceiving!!!

Quietly positioned in the highly sought-after suburb of Annandale, this low-set home is designed to deliver superb liveability for a growing family, across a versatile layout.

The home is spacious with contemporary tones and has undergone a recent refurbishment that will ensure the new tenants can move right in and enjoy.

Situated on an easy-care block, It's convenient to public transport, shops and restaurants while also accessible to schools.

THE PROPERTY

- Fully repainted with new carpets & led lighting
- 4 large private bedroom
- Main bedroom features walk through wardrobe to private ensuite
- Light-filled kitchen with ample bench and cupboard space
- Combined open-plan lounge & dining
- Well-appointed family bathroom with bathtu



Lynham & Co.
RENTALS



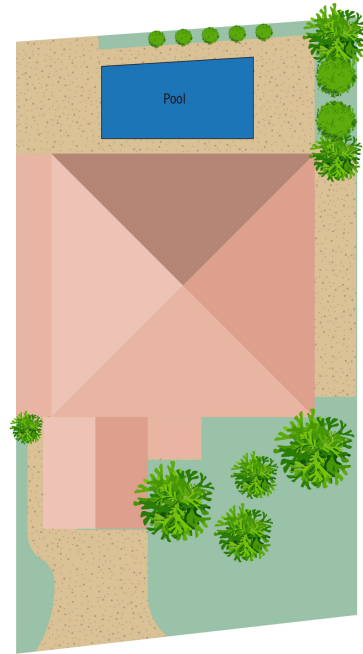
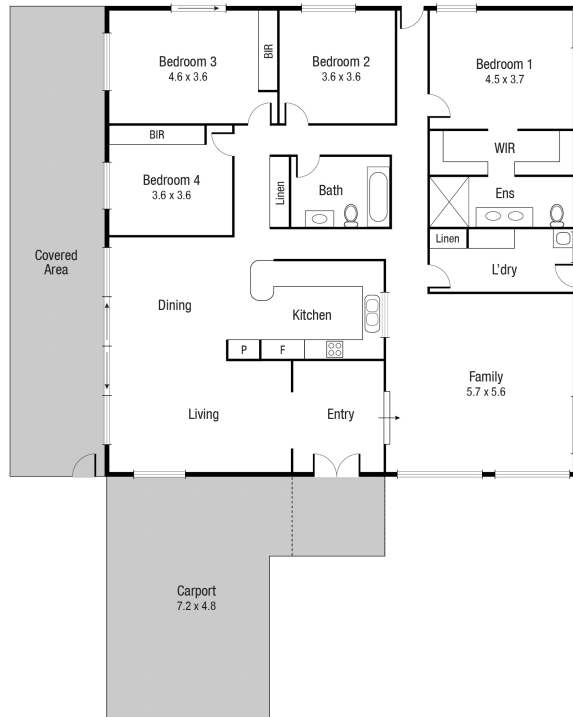
Lynham & Co. Rental



Graham Lynham
REAL ESTATE

OFFICE

37Thuringowa Drive, Kirwan
07 4723 3222



Scale in metres. Indicative only. Dimensions are approximate. All information contained herein is gathered from sources we believe to be reliable. However we cannot guarantee its accuracy and interested persons should rely on their own enquiries.

TOTAL AREA : 255.8 sq.m

20 Sinclair St, Annandale