



**PRICE GUIDE:** \$285,000.00

Area: 130 m2  
 Council Rates: \$3,407.56 p.q.  
 Strata Levy: \$1,122.12 p.q.

**Under Contract By Nathan Lynham 0427695162**

A super convenient location that offers quick and easy access to all of Townsville's amenities means this superb two-bedroom apartment delivers as both an investment and for lifestyle. Quietly positioned in the middle of the complex on the top floor and overlooking the pool, it makes an instant impact with its generous interior design that combines space, light and style to provide a private retreat.

This easy-to-maintain unit is perfect for buyers or investors seeking a great lock-up-and-leave property for a great price for such a central location.

**THE PROPERTY**

- Top floor (second level) overlooking the complex pool
- Inviting living/dining zone showcases soothing neutral tones
- Modern kitchen with ample storage
- Master bedroom with direct access to the balcony, built-in wardrobes and ensuite
- Second bedroom with built-in wardrobe
- Single car accommodation plus visitor park



**Nathan Lynham**  
0427 695 162

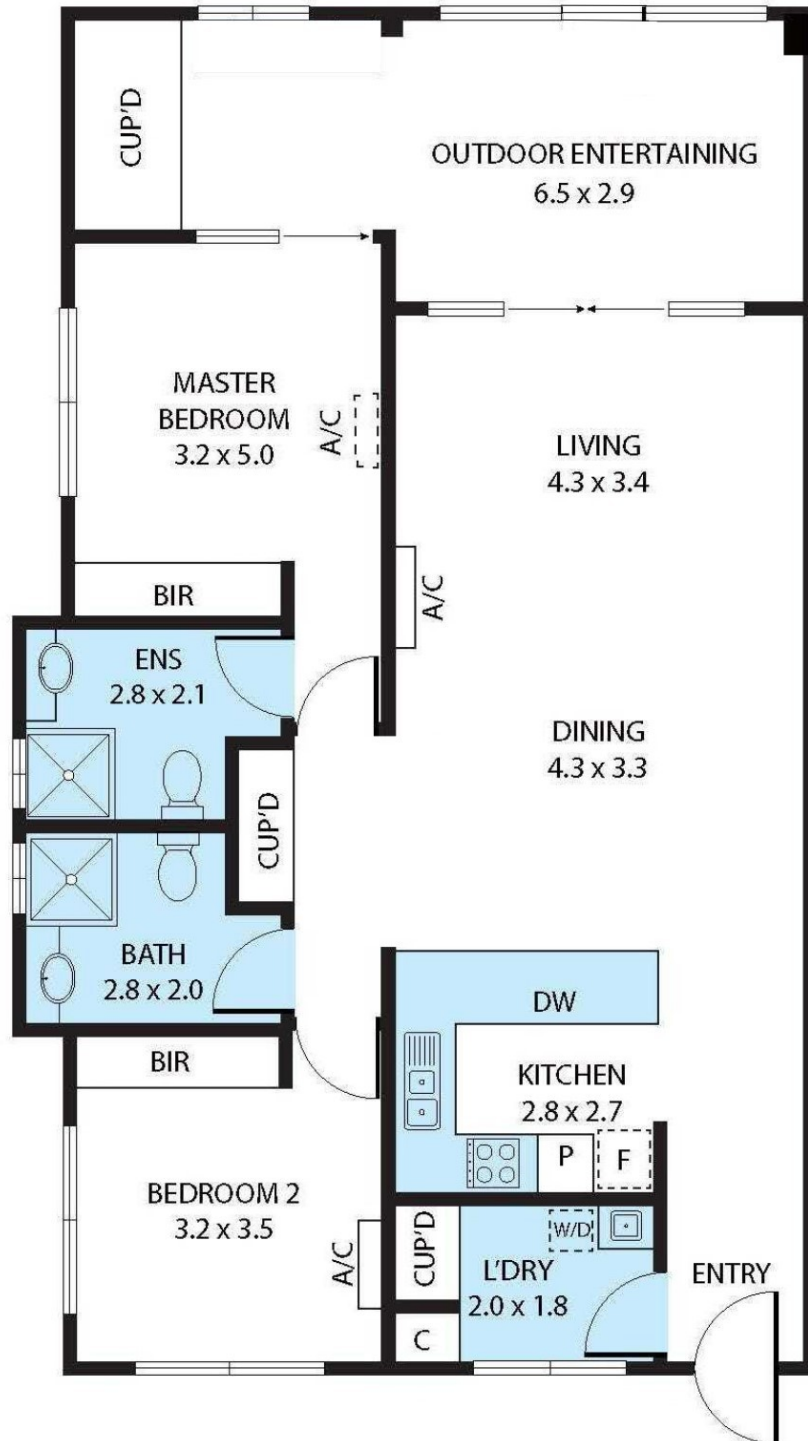


**Graham Lynham**  
0447 250 222



**OFFICE**

37Thuringowa Drive, Kirwan  
**07 4723 3222**



Whilst every attempt has been made to ensure the accuracy of the floor plan contained here, measurements of doors, windows, rooms and any other items are approximate and no responsibility is taken for any error, omission, or misstatement. This plan is for illustrative purposes only and should be used as such by any prospective purchaser.