



**PRICE GUIDE:** \$390 PER WEEK

Area: 604 m2

## Incredibly Spacious 3 Bedroom Home

Perfectly positioned on a fully fenced 604 sqm allotment, in a pocket of similar quality homes.

Boasting an open plan design with a large living area and combined dining family room next to the kitchen, all bedrooms feature built-in wardrobes and split system air-conditioners.

There is a rear patio that overlooks the backyard, which is fully fenced with double gate access.

Complimenting the home is a separate single carport at the front of the block and a lawn locker.

### THE PROPERTY

- Generous open-plan design
- Lounge room to the front of the home
- Modern kitchen
- Internal laundry with direct external access



**Lynham & Co.**  
RENTALS

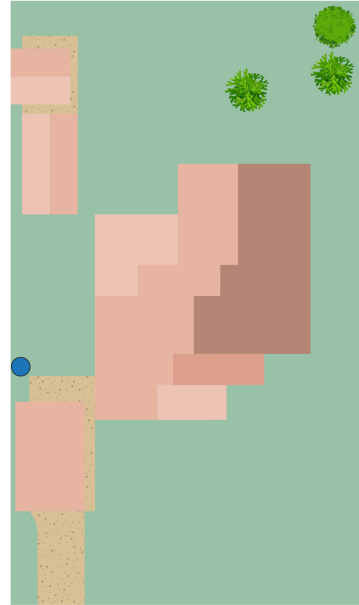
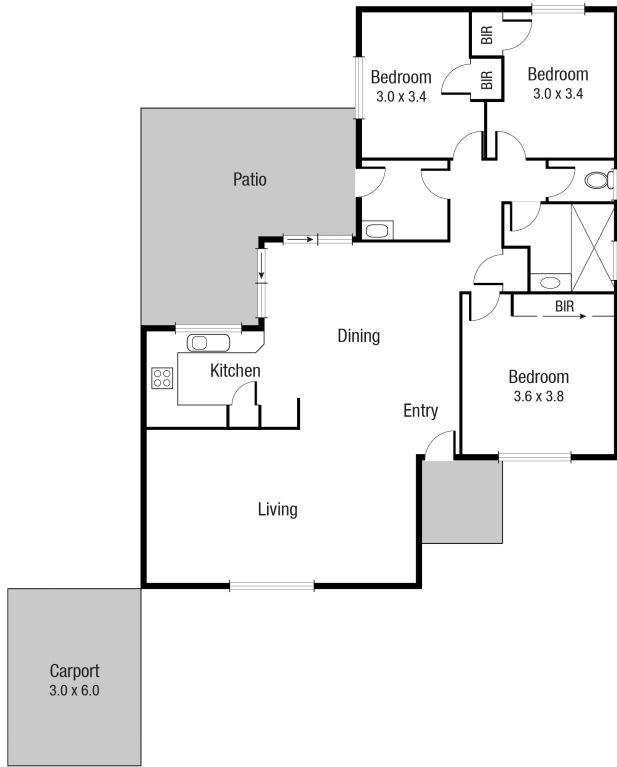


**Lynham & Co. Rental**



**OFFICE**

37Thuringowa Drive, Kirwan  
**07 4723 3222**



Scale in metres. Indicative only. Dimensions are approximate. All information contained herein is gathered from sources we believe to be reliable. However we cannot guarantee its accuracy and interested persons should rely on their own enquiries.

TOTAL AREA : 125.2 sq.m

**12 AMBER**