



PRICE GUIDE: \$320,000.00

Area: 607 m2

Under Contract By Shelly Lynham 0414250166

A fantastic family home with a beautiful breezy ambience, this property presents an enviable lifestyle opportunity close to the River, Shops and Public Transport close by. A solid high-set home that has polished timber floors, and is fully air-conditioned with a large deck & three bay shed it is appealing to all potential purchasers.

THE PROPERTY

- Upstairs
- 3 Bedrooms
 - Open plan living/dining area upstairs
 - Timber kitchen with stone benchtop
 - Family-sized bathroom
 - Fully air-conditioned
 - Large deck for entertaining
 - Polished timber floors

The property is currently tenanted until 31s



Shelly Lynham
0414 250 166

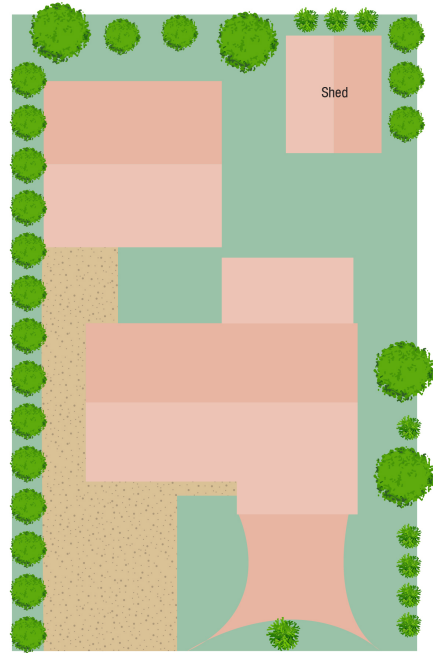
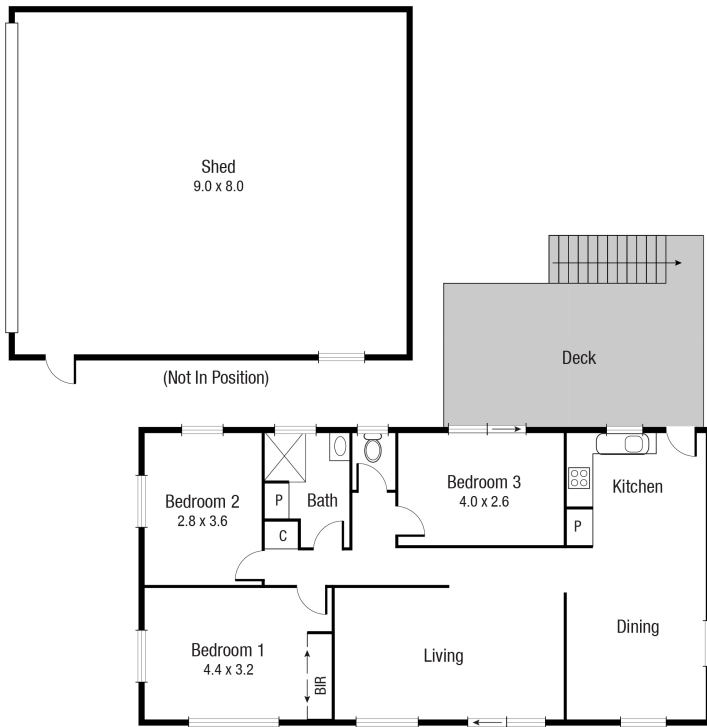


Graham Lynham
0447 250 222



OFFICE

37Thuringowa Drive, Kirwan
07 4723 3222



Scale in metres. Indicative only. Dimensions are approximate. All information contained herein is gathered from sources we believe to be reliable. However we cannot guarantee its accuracy and interested persons should rely on their own enquiries.

TOTAL AREA : 112.7 sq.m

40 GOLLOGLY