



PRICE GUIDE: \$315,000.00

Area: 604 m2

Council Rates: \$3,300.00 p.q.

Sold by Graham and Shelly Lynham 0414250166

Located in a quiet street, and presented to an exceptional level, this three bedroom offers the new owner the ability to move in and sit back.

Freshly painted, and modernised, and featuring three bedrooms, all with built-in wardrobes and split system air-conditioning, along with a modern bathroom and kitchen, and an open plan living and dining, you would be forgiven for thinking the home's appeal is on the inside.

Step outside, and be greeted by well-maintained gardens, and a large full-length rear patio, perfectly positioned to take advantage of the homes east west aspect to enjoy the shade in the afternoon for entertaining or simply relaxing.

Certainly one of the best presented of its style on the market, and worthy of consideration by homeowners and investors alike.

THE PROPERTY

- Three bedrooms all with built-in wardrobes



Shelly Lynham
0414 250 166

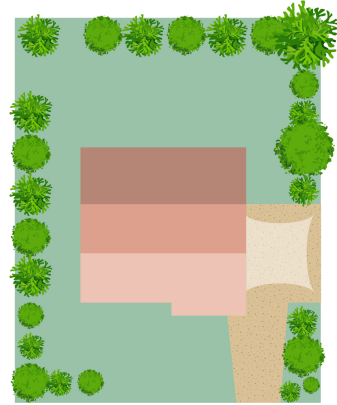
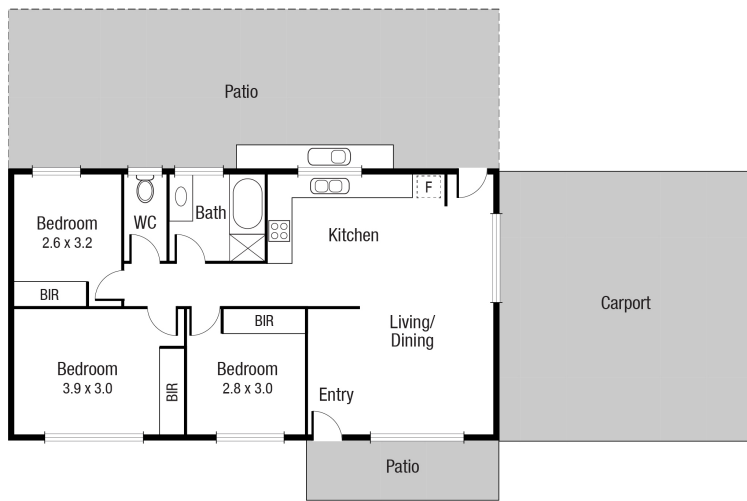


Graham Lynham
0447 250 222



OFFICE

37Thuringowa Drive, Kirwan
07 4723 3222



Scale in metres. Indicative only. Dimensions are approximate. All information contained herein is gathered from sources we believe to be reliable. However we cannot guarantee its accuracy and interested persons should rely on their own enquiries.

TOTAL AREA : 117.7 sq.m

4 Jabiru Av, Condon