



PRICE GUIDE: \$390,000.00

Area: 416 m2

Council Rates: \$3,684.04 p.q.

Sold By Nathan Lynham 0427695162

With an emphasis on comfort, ease and relaxation, this single level low maintenance home, boasts a fresh interior and open plan living. Just minutes from shops, schools, and transport.

In a highly sought-after location, and boasting three bedrooms plus a study nook, a private ensuite & double garage, this 178sqm home is bound to leave a lasting impression.

THE PROPERTY

- Three generous bedrooms with new carpets and built-in wardrobes
- Main bedroom features a private ensuite and Hollywood wardrobe
- Light bathed contemporary open plan living and dining zone
- Modern kitchen with appliances and ample storage
- Modern main bathroom with separate toilet
- Inviting tiled patio area overlooking the rear lawn
- Double car lock-up garage with internal access and automatic door
- Rates - \$3,684.04 per year
- Close to Private and State Schools and day

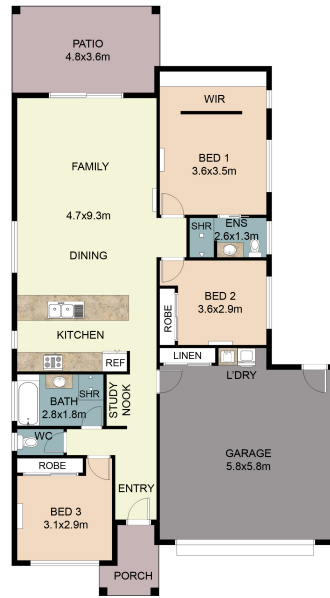


Nathan Lynham
0427 695 162

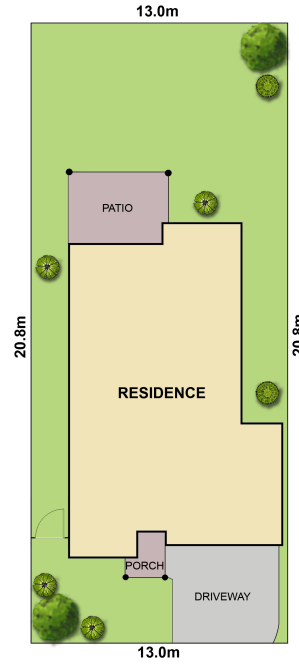


OFFICE

37Thuringowa Drive, Kirwan
07 4723 3222



FLOOR PLAN



NIMA STREET
SITE PLAN

Floor Area	: 117.34m ²
Garage	: 37.98m ²
Patio	: 19.96m ²
Porch	: 3.54m ²
Total	: 178.82m ²
Site Area	: 416.00m ²

This floor plan including furniture, fixture measurements and dimensions are approximate and for illustrative purposes only. BoxBrownie.com gives no guarantee, warranty or representation as to the accuracy and layout. All enquiries must be directed to the agent, vendor or party representing this floor plan.

16 Nima St, Burdell, QLD, 4818