

PRICE GUIDE: \$675,000.00

Area: 8897 m2

Rare find over 2 acres + Large family home + 2 sheds + pool

Hidden at the end of a quiet court, and set on a very private 8897 m2 (over 2 acres) allotment, this home embodies what Sir Rupert Clarke would have had in mind when he set about developing what is "Rupertswood".

Commanding attention from when you first enter through the front gates, the main home is a generously sized 4 bedroom design.

The master bedroom, complete with ensuite, walk-in robe and spa sits at one end. Whilst the remaining bedrooms are generously sized with built-ins.

A large kitchen, dining room lounge and family room all offer access to a sweeping verandah that encapsulates the home.

To the rear of the home, the patio extends to provide an entertaining area overlooking the inground pool.

Set to the side of the allotment, a large th



Graham Lynham
0447 250 222

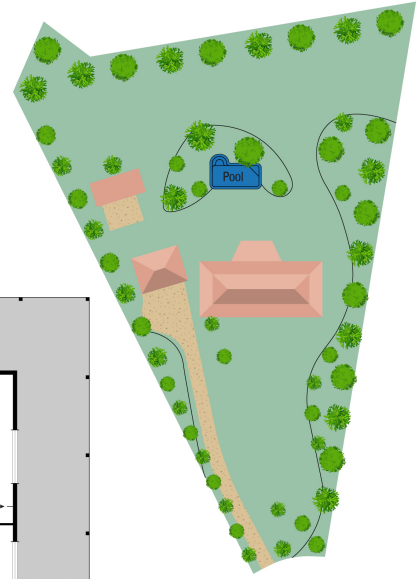
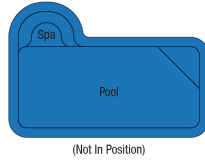
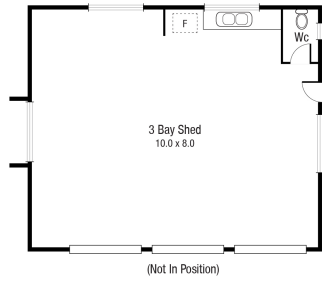


Shelly Lynham
0414 250 166



OFFICE

37Thuringowa Drive, Kirwan
07 4723 3222



Scale in metres. Indicative only. Dimensions are approximate. All information contained herein is gathered from sources we believe to be reliable. However we cannot guarantee its accuracy and interested persons should rely on their own enquiries.

TOTAL AREA : 403.9 sq.m

11 Kerrie Court, Alice River