



PRICE GUIDE: \$580 Per Week

Area: 485 m2

Modern 4 Bedroom Family Home Close To The City

Located in one of Townsville's sought after suburbs, this is a wonderful opportunity to secure a spacious & modern 4 bedroom home in a family-friendly street.

Nestled amongst other high-quality homes in a quiet street in a select area of the estate, this home features 4 generous sized bedrooms, an open plan layout with separate living spaces and an excellent aspect to maximise the use of prevailing breezes. Proximity to major shopping and schools is a real convenience and it is also on the doorstep of the city.

THE PROPERTY

- Generous sized bedrooms all with carpet and built-in wardrobes
- The main bedroom features a private ensuite with a walk-in shower & walk-in wardrobe
- Modern functional kitchen with ample storage including a corner pantry
- Internal laundry
- Two car accommodation with secure remote a



Lynham & Co.
RENTALS

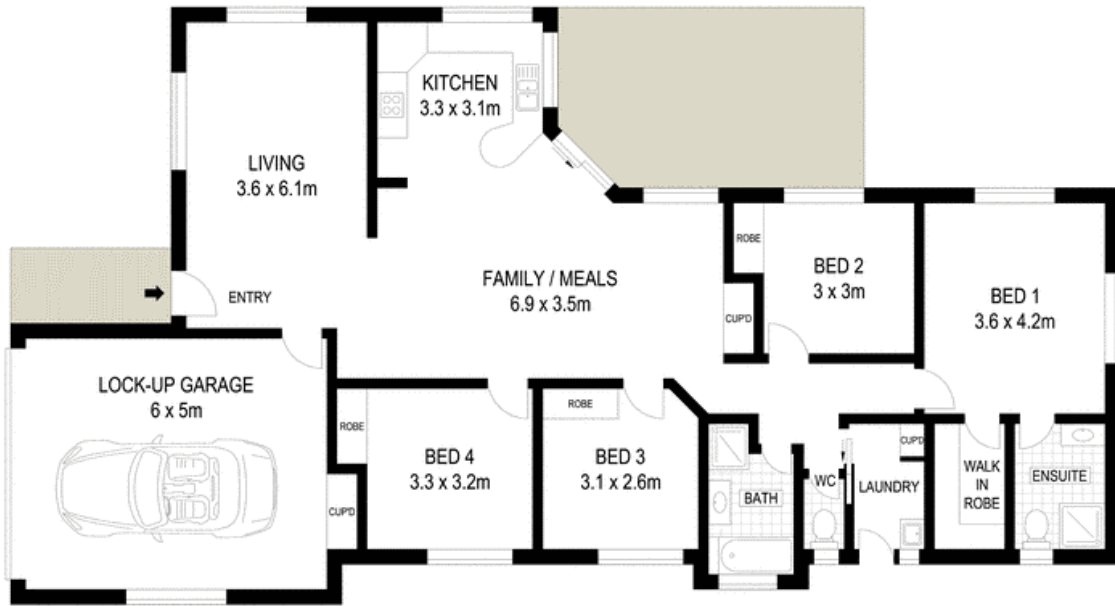


Lynham & Co. Rental

GrahamLynham
REAL ESTATE

OFFICE

37Thuringowa Drive, Kirwan
07 4723 3222



Scale in metres. Indicative only. Dimensions are approximate. All information contained herein is gathered from sources we believe to be reliable. However we cannot guarantee its accuracy and interested persons should rely on their own enquiries