



PRICE GUIDE: \$310,000.00

Area: 839 m2
Council Rates: \$4,082.20 p.q.

Sold By Nathan Lynham 0427695162

Beautifully designed with a family in mind, this high-set home boasts generous proportions over two levels with an updated & modern interior.

Sitting on an 839sqm allotment in a central location, minutes from the Willows Shopping Centre, and walking distance to the Weir Primary and Kirwan High Schools, this well-appointed family home is perfect for young families to excel.

THE PROPERTY

- Three airy and spacious bedrooms with air conditioning
- Spacious kitchen with ample storage
- Open plan living/dining flowing onto the covered patio area
- Renovated bathroom combined shower/bathtub & separate toilet
- Rumpus rooms downstairs complete with separate shower & toilet
- Internal staircase
- Vinyl planking throughout upstairs
- Double covered carport to the rear
- Very convenient location central to all ma

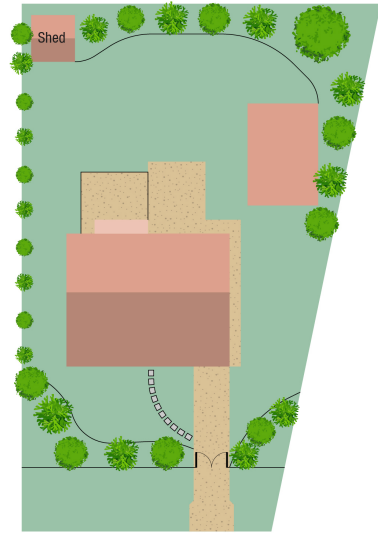


Nathan Lynham
0427 695 162



OFFICE

37Thuringowa Drive, Kirwan
07 4723 3222



Scale in metres. Indicative only. Dimensions are approximate. All information contained herein is gathered from sources we believe to be reliable. However we cannot guarantee its accuracy and interested persons should rely on their own enquiries.

TOTAL AREA : 237.6 sq.m

8 Nonda St, Kirwan