



PRICE GUIDE: \$410,000.00

Area: 647 m2

Sold By Nathan Lynham 0427695162

Holding a prime position in the heart of Aitkenvale, close to the TAFE and Pimlico State High School, sits this well-presented high-set home.

Situated on a 647sqm block bordering parkland with only one side neighbour in a family-friendly Cul-de-sac. This home has been designed to take full benefit of a breeze catching position and the further added benefit of a large double bay shed.

Downstairs (lower level) which is fully lockable has been designed with scope to create a second living area. Planning included both the necessary plumbing access points, design components and importantly height consideration.

THE PROPERTY

- High set family home in a quiet family-friendly street
- Low maintenance steel construction completed 2016
- Two-bedroom feature air-conditioning
- Great elevation capturing breezes and leaf

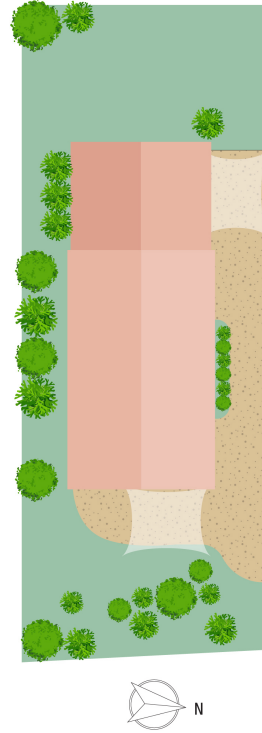
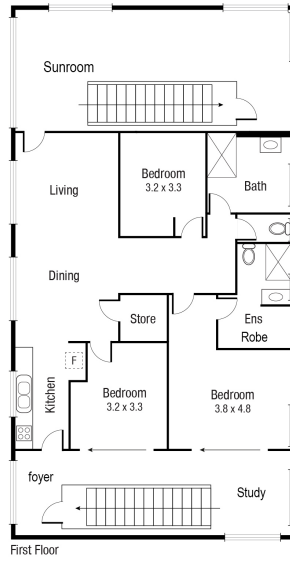
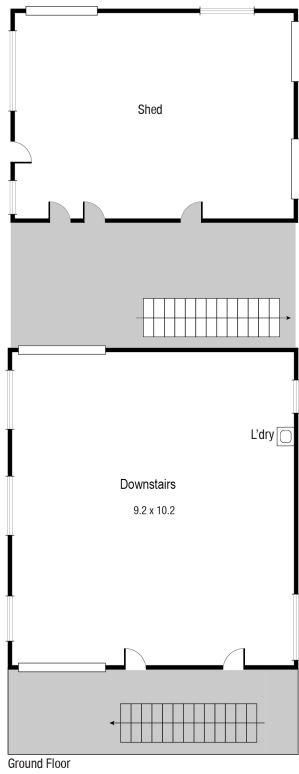


Nathan Lynham
0427 695 162



OFFICE

37Thuringowa Drive, Kirwan
07 4723 3222



Scale in metres. Indicative only. Dimensions are approximate. All information contained herein is gathered from sources we believe to be reliable. However we cannot guarantee its accuracy and interested persons should rely on their own enquiries.

TOTAL AREA : 272.2 sq.m

15 Burns St, Aitkenvale