



PRICE GUIDE: \$390,000.00

Area: 613 m2

Sold By Nathan Lynham 0427695162

Quietly positioned in the Convenient 'The Avenues', this low set residence offers comfortable family living across a cleverly designed layout. Its desirable location is within close vicinity to local parks, public transport and many schools, Ryan Catholic College, St Benedict's Catholic School, Kirwan State School.

THE PROPERTY

- Generous bedrooms, master with ensuite and walk-in wardrobe
- Bright kitchen with ample storage
- Combined living and dining room flows out to rear patio area
- Formal family room to the front of the home
- Family bathroom features a combination shower/bathtub and a separate toilet
- Covered rear patio overlooking the grassed backyard
- Low set in a quiet family-friendly street, double garage
- Level 613sqm allotment, fully fenced yard
- Close proximity to Willows Shopping Centre

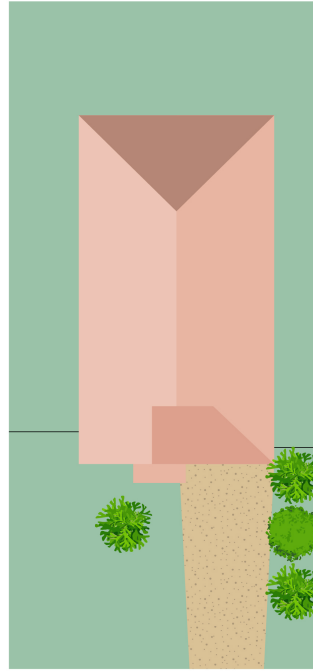
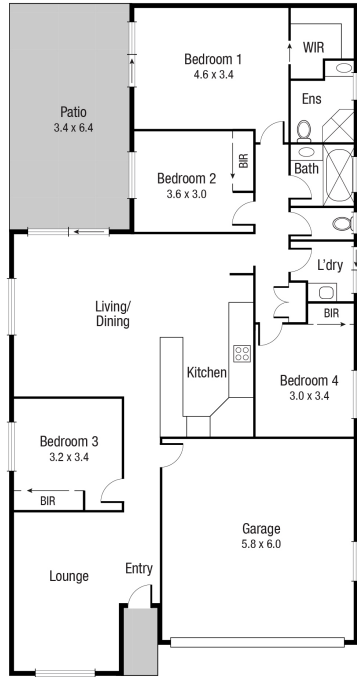


Nathan Lynham
0427 695 162



OFFICE

37Thuringowa Drive, Kirwan
07 4723 3222



Scale in metres. Indicative only. Dimensions are approximate. All information contained herein is gathered from sources we believe to be reliable. However we cannot guarantee its accuracy and interested persons should rely on their own enquiries.

TOTAL AREA : 191.2 sq.m

8 Montebello Cir, Kirwan