



PRICE GUIDE: \$395,000.00

Area: 308 m2

Sold By Graham & Shelly Lynham - 0447250222 & 0414250166

Located in a tightly held and centrally located pocket of Douglas and offering a unique feel through its distinctive design of timber floors and high ceilings this home represents a unique opportunity to join the Douglas community.

The Property

- Polished timber floors throughout
- Modern kitchen with stainless steel appliances
- Three bedrooms
- Main Bedroom with built ins and ensuite
- Study nook
- Fully air conditioned
- Timber deck
- Secure lockable garage
- Insulation to roof
- Within minutes to Townsville University Ho



Shelly Lynham
0414 250 166



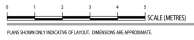
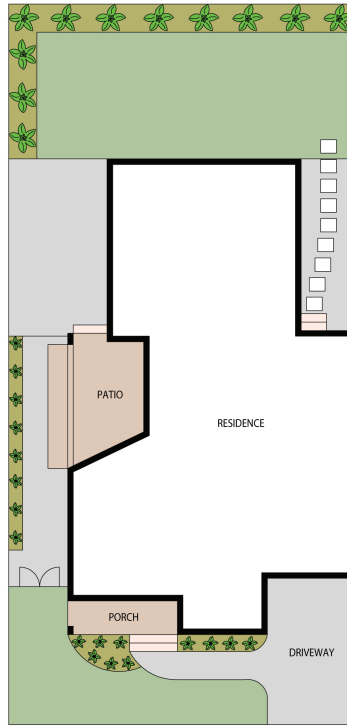
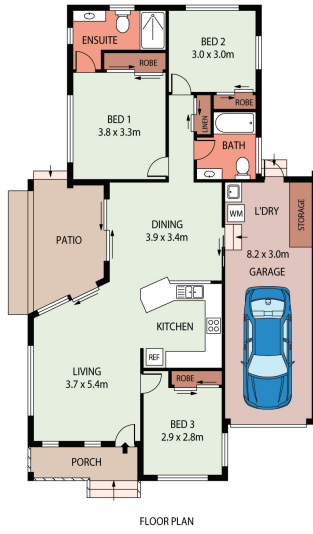
Graham Lynham
0447 250 222



OFFICE

37Thuringowa Drive, Kirwan
07 4723 3222

LIVING 97.42m²
 PORCH 5.05m²
 PATIO 13.99m²
 GARAGE/ L'DRY 27.28m²
 TOTAL AREA 143.74m²



36 PADDINGTON TERRACE,
DOUGLAS, QLD, 4814

Lynham
REAL ESTATE