



PRICE GUIDE: \$340,000.00

Area: 696 m2

Council Rates: \$3,400.00 p.q.

Sold by Shelly and Graham Lynham

For buyers wanting space within a convenient location, look no further than this meticulously maintained family home.

Beautifully set within a quiet court the home offers a great sense of space for the family or couple with an opportunity to purchase.

The Property

- Modern Kitchen
- Two living areas
- Fully air conditioned
- Separate dining and living
- Three bedrooms with built in cupboards
- Internal laundry
- Two separate work/sewing or study rooms
- Crime safe security screens throughout
- Outdoor entertaining area
- Large carport

Call us today for a private inspection on 04



Shelly Lynham
0414 250 166

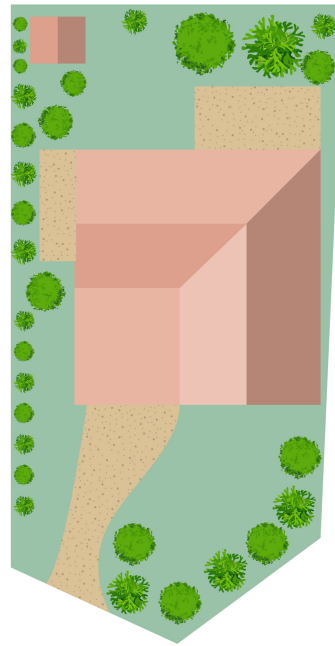
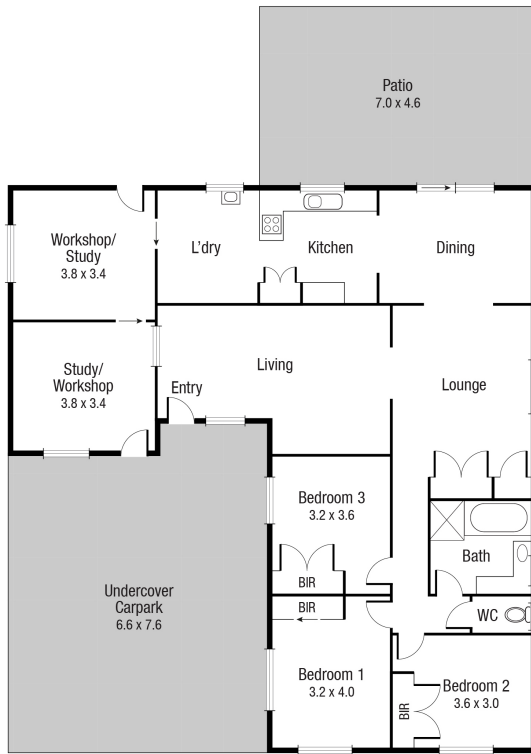


Graham Lynham
0447 250 222



OFFICE

37Thuringowa Drive, Kirwan
07 4723 3222



Scale in metres. Indicative only. Dimensions are approximate. All information contained herein is gathered from sources we believe to be reliable. However we cannot guarantee its accuracy and interested persons should rely on their own enquiries.

TOTAL AREA : 177.2 sq.m

3 Joule Court, Wulguru