



**PRICE GUIDE:** \$390,000.00

Area: 451 m2

### Sold By Nathan Lynham 0427695162

Offering striking interiors with maximum space and plenty of natural light this beautifully designed home is located within easy walking distance of Sunhaven Park & North Shore State School.

This home has been purposely built as a single level throughout from front to back allowing for someone to downsize to a low maintenance living but still allow a modern flow for a first home buyer or investor.

#### THE PROPERTY

- Striking interiors maximise space, natural light and function
- Three carpeted bedrooms, all with built-in wardrobes
- Oversized master bedroom features a smart ensuite bathroom
- Superior kitchen equipped with stainless steel appliances & ample storage
- Combined lounge and dining room flowing out to rear patio
- Contemporary bathroom complete with combination bath/shower & separate toilet
- Solar power system
- Moments to the North Shore Precinct, Shopp



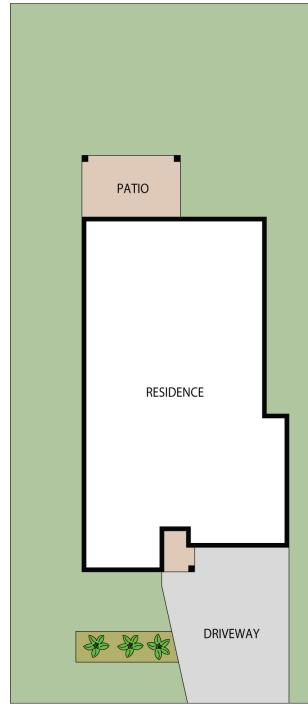
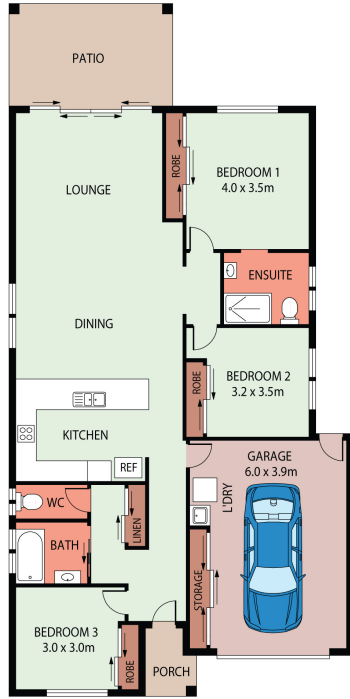
**Nathan Lynham**  
0427 695 162



**OFFICE**

37Thuringowa Drive, Kirwan  
**07 4723 3222**

LIVING 123.84m<sup>2</sup>  
 PATIO 14.40m<sup>2</sup>  
 GARAGE 29.52m<sup>2</sup>  
 PORCH 2.68m<sup>2</sup>  
 TOTAL AREA 170.44m<sup>2</sup>



SITEPLAN

0 1 2 3 4 5 SCALE (METRES)

PLANS SHOWN ONLY INDICATIVE OF LAYOUT. DIMENSIONS ARE APPROXIMATE.

23 BISCAVNE STREET, BURDELL, QLD, 4818

**Lynham**  
 REAL ESTATE