



PRICE GUIDE: \$385,000.00

Area: 669 m2

Sold By Nathan Lynham 0427695162

This fantastic home embodies a feeling of comfort and generosity throughout! Within walking distance to Avenues and a short drive to Willows, the home also offers a versatile layout with both indoor and outdoor entertaining areas.

THE PROPERTY

- Four tiled bedrooms, all with built-in wardrobes
- Rear master bedroom complete with ensuite
- Combined lounge and dining room with additional family area
- Central and functional electric kitchen
- Private covered patio for outdoor living and entertaining
- Internal laundry with storage and access to the clothesline
- Family bathroom with bath, shower and adjoining toilet
- Private covered patio for outdoor living and entertaining
- Double remote lock-up garage
- Fully fenced 669 m2 allotment

- A stones throw to newly built Daycare 'Gre



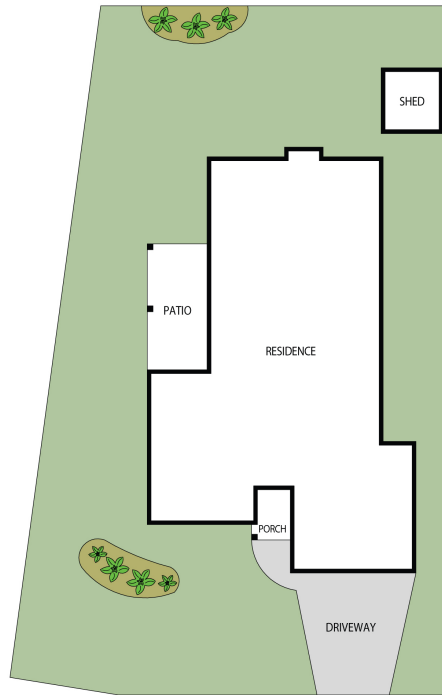
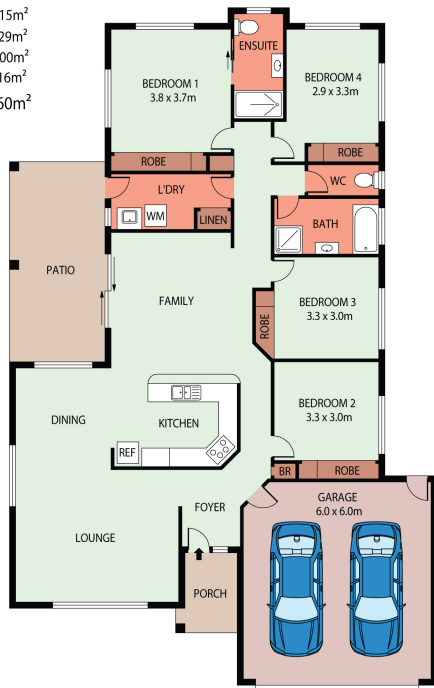
Nathan Lynham
0427 695 162



OFFICE

37Thuringowa Drive, Kirwan
07 4723 3222

LIVING 165.15m²
 GARAGE 39.29m²
 PATIO 18.00m²
 PORCH 4.16m²
 TOTAL AREA 221.60m²



0 1 2 3 4 5 SCALE (METRES)

PLANS SHOWN ONLY INDICATIVE OF LAYOUT. DIMENSIONS ARE APPROXIMATE.

28 SCARISBRICK DRIVE, KIRWAN, QLD, 4817



All information contained herein is gathered from sources we believe to be reliable. However we cannot guarantee its accuracy and interested persons should rely on their own enquiries.