



PRICE GUIDE: \$315,000.00

Area: 432 m2

Council Rates: \$3.00 p.q.

Sold by Shelly and Graham Lynham

Situated in a quiet street in popular Willows, and ready to move into, this 3 bedroom home is perfect for the first home buyer, investors or someone downsizing wanting low maintenance living in one of Townsville's most popular suburbs.

Featuring 3 large bedrooms, a master with ensuite, and spacious living areas, the home offers an easy lifestyle.

The home is fully security screened and air-conditioned and has the benefit of a multi-functional alfresco room with a servery to the kitchen which is perfect for entertaining or relaxing.

THE PROPERTY

- Three bedroom
- Master with ensuite
- Built-ins
- Fully airconditioned
- Minutes to Canon Park the Willows Readings



Shelly Lynham
0414 250 166

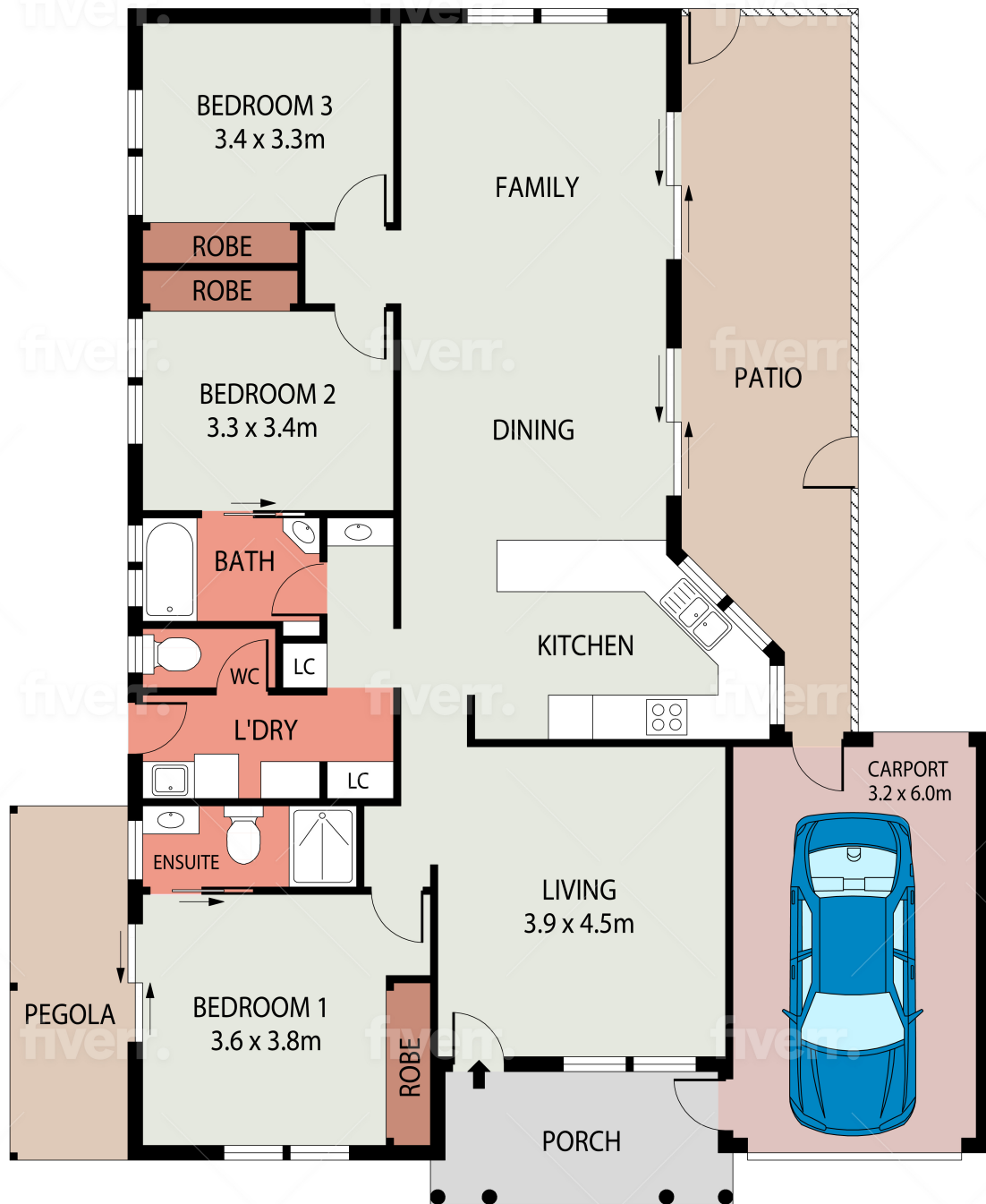


Graham Lynham
0447 250 222



OFFICE

37Thuringowa Drive, Kirwan
07 4723 3222



PLANS SHOWN ONLY INDICATIVE OF LAYOUT. DIMENSIONS ARE APPROXIMATE.

4 PINNATA PLACE KIRWAN 4817