



**PRICE GUIDE:** \$232,500.00

Area: 1012 m2

### Sold By Nathan Lynham 0427695162

Positioned within the Pimlico State High School catchment, this original blank canvas two-bedroom home presents a great opportunity whether you are a first home buyer looking to renovate or looking to knock down and build your dream home in a premium location.

#### THE PROPERTY

- Two bedrooms both with air conditioning
- Polished timber floors & casement windows throughout
- Separate dining room off the kitchen
- Functional original kitchen with ample cabinetry/cupboards
- Lounge room to the front of the home
- Single level layout with wheelchair access via the front
- Positioned at the front of a 1,012sqm allotment

#### THE LOCATION

- Uniquely positioned in the heart of Pimlico just moments from the lakes
- Close to CBD and inner-city luxuries

Disclaimer: Whilst every care is taken in th

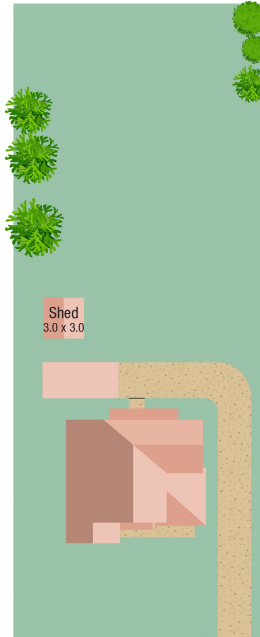
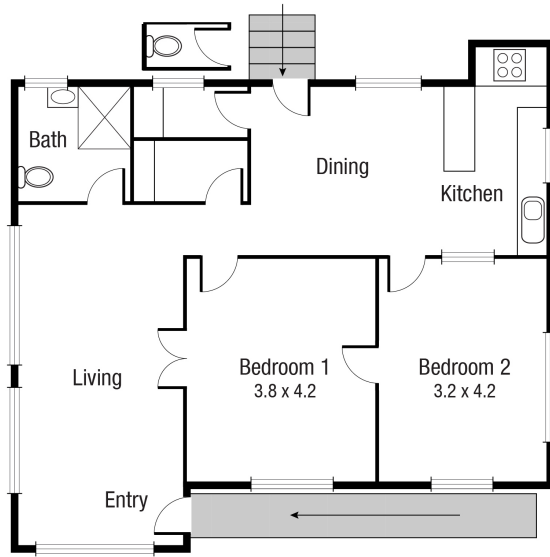


**Nathan Lynham**  
0427 695 162



**OFFICE**

37Thuringowa Drive, Kirwan  
**07 4723 3222**



Scale in metres. Indicative only. Dimensions are approximate. All information contained herein is gathered from sources we believe to be reliable. However we cannot guarantee its accuracy and interested persons should rely on their own enquiries.

TOTAL AREA : 84.8 sq.m

19 French St, Pimlico