



PRICE GUIDE: \$225,000.00

Council Rates: \$3,437.00 p.q.

Strata Levy: \$504.60 p.q.

Sold By Nathan Lynham 0427695162

Set in a prime location in the heart of Pimlico, this well-designed townhouse boasts a timeless layout intended for comfort and functionality.

Offering a tranquil lifestyle, it is located near a range of quality schools and public transport options and one of Townsville's leading hospitals.

THE PROPERTY

- Sunlit open plan living/dining zones flows to the private rear deck
- Modern open kitchen boasts a large island bench
- 3 large bedrooms all situated upstairs
- 2 bedrooms feature built-in wardrobes
- Main bathroom featuring combined shower/bathtub
- Downstairs internal laundry with second toilet & additional storage space
- Single remote garage
- Air conditioning, ceiling fans, modern fittings with neutral tones
- Body Corporate Levies - \$2,018.38 per year
- Rates - \$3,437 per year
- Positioned moments to shopping amenities [

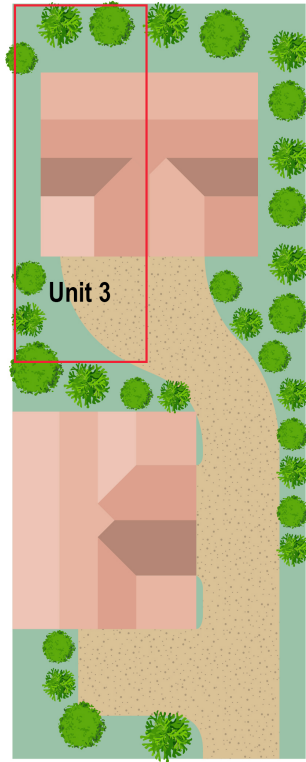
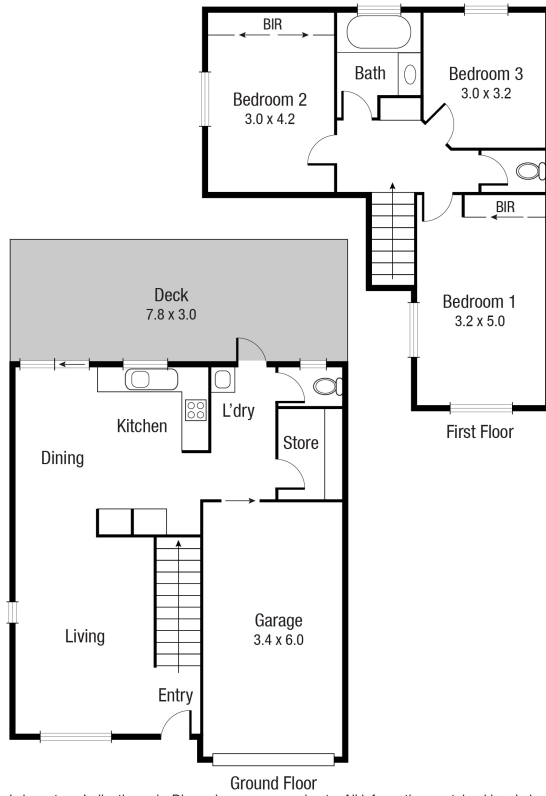


Nathan Lynham
0427 695 162



OFFICE

37Thuringowa Drive, Kirwan
07 4723 3222



Scale in metres. Indicative only. Dimensions are approximate. All information contained herein is gathered from sources we believe to be reliable. However we cannot guarantee its accuracy and interested persons should rely on their own enquiries.

TOTAL AREA : 142.8 sq.m

3/46 French St, Pimlico