



PRICE GUIDE: \$315,500.00

Area: 480 m2

Family Home In The Heart Of Kirwan

Ideally positioned within Kirwan the ever-popular The Avenues Estate, this 3 bedroom home encompasses style, charm and practicality.

THE PROPERTY

- Main bedroom features a split system air conditioner, built-in wardrobe & private ensuite
- Remaining bedrooms feature built-in wardrobes with box air conditioners
- Combined living & dining room to the front of the home
- Separate family room just off the kitchen
- Modern open plan kitchen with ample storage
- Modern main bathroom with combined shower/bathtub & separate toilet
- Good size patio
- Fenced 480sqm allotment
- Double remote garage
- Internal laundry within the garage

THE LOCATION

- Close proximity to Willows Shopping Centre

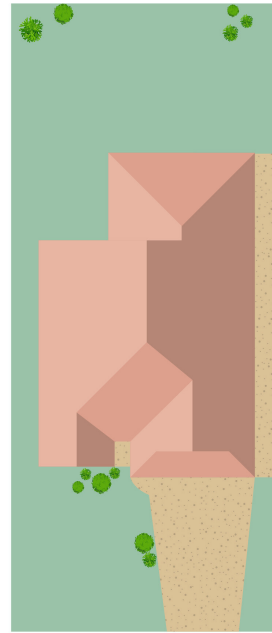
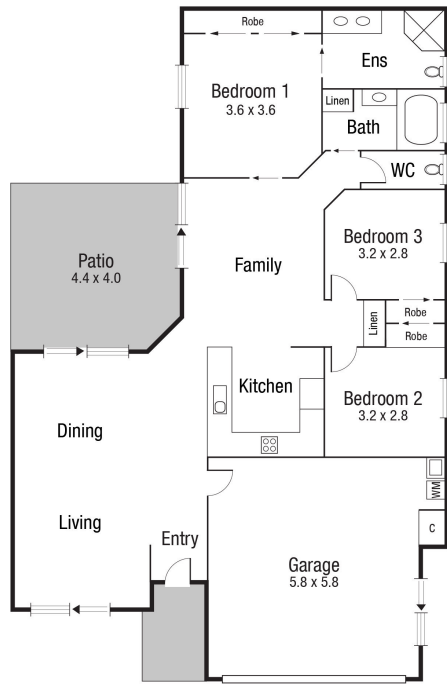


Graham Lynham
0447 250 222



OFFICE

37Thuringowa Drive, Kirwan
07 4723 3222



Scale in metres. Indicative only. Dimensions are approximate. All information contained herein is gathered from sources we believe to be reliable. However we cannot guarantee its accuracy and interested persons should rely on their own enquiries.

TOTAL AREA : 167.9 sq.m

4 Ormonde Court, Kirwan