



PRICE GUIDE: \$305,000.00

Area: 686 m2

Massive family home with all hard work done

Bathed in light across a convenient layout with multiple living zones, this home blends European appeal with enviable family living. With a versatile layout in a sought-after locale, this home is moments from local parks, shops and transport.

THE PROPERTY

- 4 bedroom with built-in wardrobes
- Master bedroom features a private ensuite
- Large bright kitchen with ample storage and counter space
- Separate dining and lounge room
- Study (potential fifth bedroom)
- Refurbished main bathroom with walk-in shower
- Separate toilet
- Large rumpus or games room.
- Air-conditioned throughout.
- Double garage
- Low maintenance 685sqm allotment
- Close proximity to Cannon Park Complex and



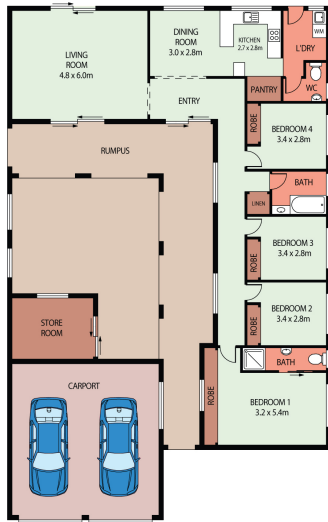
Graham Lynham
0447 250 222



OFFICE

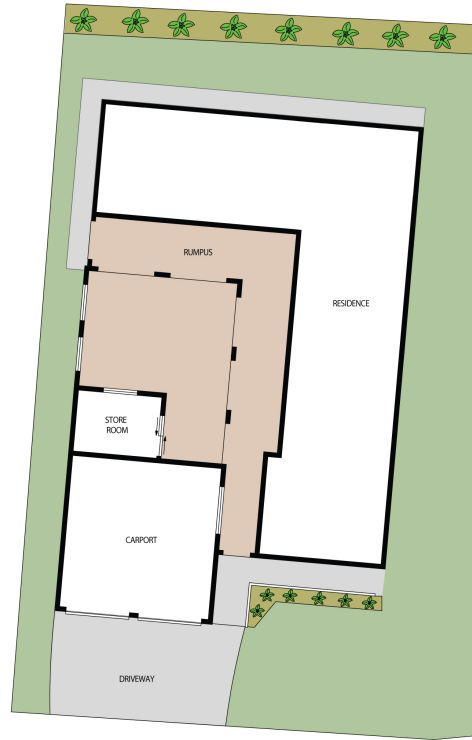
37Thuringowa Drive, Kirwan
07 4723 3222

LIVING 139.38m²
 CARPORT 44.22m²
 STORE 9.99m²
 PATIO 47.02m²
 TOTAL AREA 240.61m²



FLOOR PLAN

0 1 2 3 4 5 SCALE (METRES)
 PLANS SHOW ONLY INDICATIVE OF LAYOUT. DIMENSIONS ARE APPROXIMATE.



SITE PLAN

199 THURINGOWA DRIVE,
 KIRWAN, QLD 4817

Lynham
 REAL ESTATE