



PRICE GUIDE: \$455,000.00

Area: 2164 m2

Sold By Nathan Lynham 0427695162

Impressive in scale and design, this stunning family home combines fresh contemporary interiors with premium finishes. Designed for family comfort, this ready to move into home provides a versatile layout, spacious interiors all with the benefits of acreage lifestyle within Mount Margaret Estate.

THE PROPERTY

- Expansive 239sqm layout offering a versatile layout
- Outdoor entertaining area extending onto fenced rear yard
- Master bedroom appointed with walk-in wardrobe and ensuite
- Well appointed kitchen with stone benchtops, gas stove & stainless steel appliances
- Walk-in butlers pantry leads off from the kitchen
- Open plan living & dining with direct access to patio
- Four bedrooms all fitted with built-in wardrobes
- Main bathroom features separate shower & bathtub
- Internal Laundry
- Double Carport
- A safe and quiet neighbourhood with plenty



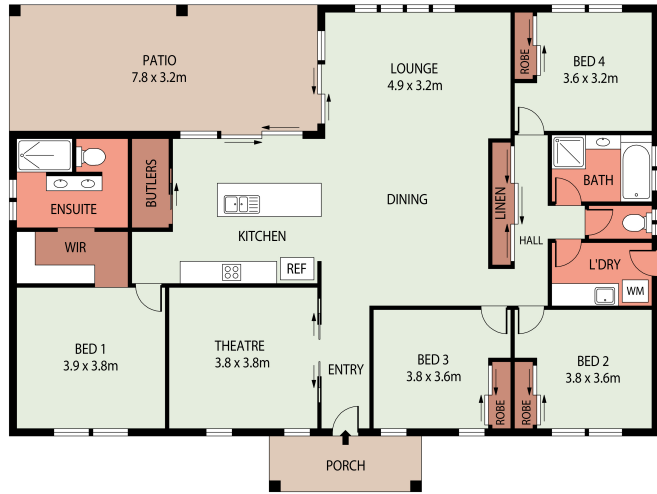
Nathan Lynham
0427 695 162



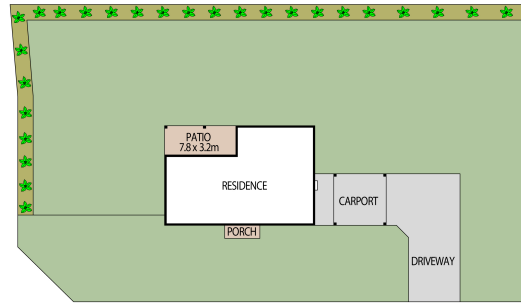
OFFICE

37Thuringowa Drive, Kirwan
07 4723 3222

LIVING	170.00m ²
CARPORT	36.00m ²
PORCH	6.00m ²
PATIO	27.20m ²
TOTAL AREA	239.20m²



FLOOR PLAN



SITE PLAN

169 CRYSTAL CRESCENT
ALICE RIVER, QLD 4818

Lynham
REAL ESTATE