



PRICE GUIDE: \$425,000.00

Area: 495 m2

Sold By Nathan Lynham 0427695162

This four bedroom home has been designed with an open plan living in mind. The main living area features cathedral ceilings and glass surrounds allowing the natural light to shine through the large open living and dining areas flowing out onto the sun room and then to the outdoor entertaining area.

THE PROPERTY

- 4 four bedrooms with built-in wardrobes
- Fully air conditioned throughout.
- Master bedroom with unique ensuite and walk-in wardrobe
- Unique glass and wooden doors throughout.
- Designed to capture the light and breezes.
- Large kitchen with servery and pantry.
- Living areas are tiled with feature tiles.
- Dual way linen cupboard from the hallway into the bathroom.
- Large rear entertaining area
- Double front door with security screens.
- Fully fenced and irrigated.
- Remote double lock-up garage widened for l



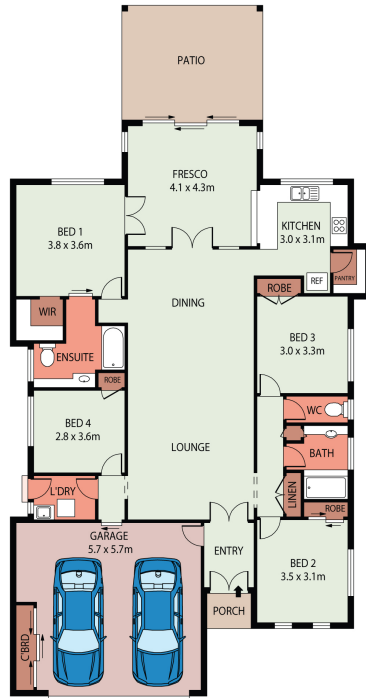
Nathan Lynham
0427 695 162



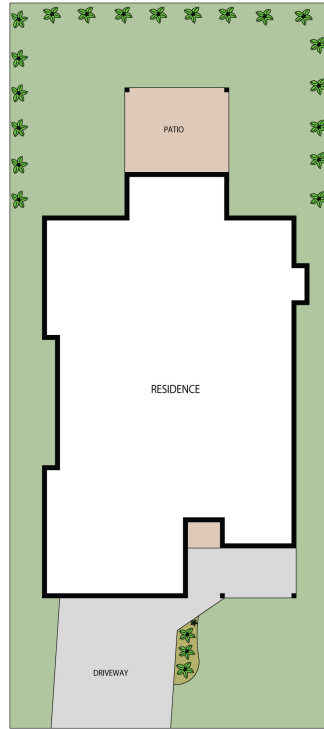
OFFICE

37Thuringowa Drive, Kirwan
07 4723 3222

LIVING 159.24m²
 GARAGE 38.67m²
 PORCH 1.92m²
 PATIO 19.2m²
 TOTAL AREA 219.03m²



FLOOR PLAN



SITE PLAN

0 1 2 3 4 5 SCALE (METRES)
 PLANS SHOWN ONLY TO INDICATE LAYOUT. DIMENSIONS ARE APPROXIMATE.

26 ELLSWORTH DRIVE
 MOUNT LOUISA, QLD 4818

Lynham
 REAL ESTATE