



PRICE GUIDE: \$270,000.00

Area: 498 m2

Character filled home in riverside precinct

Sold by Graham and Shelly Lynham

Nestled in a very quiet and secluded pocket of Rosslea, only metres from Ross River, bikeways and parks, it's not hard to understand why homes in this location are so tightly held.

With the charm of what a timber low set home with casement windows can only offer, and set on low maintenance corner allotment, the home represents affordable entry into one of Townsville's most popular suburbs.

THE HOME

- Three bedrooms, two with built-in robes
- Large kitchen with preparation island
- Generously sized open plan dining and living room
- Fully air-conditioned
- Timber floors throughout
- Modern bathroom with separate toilet
- Security Screens to doors windows and louv



Shelly Lynham
0414 250 166

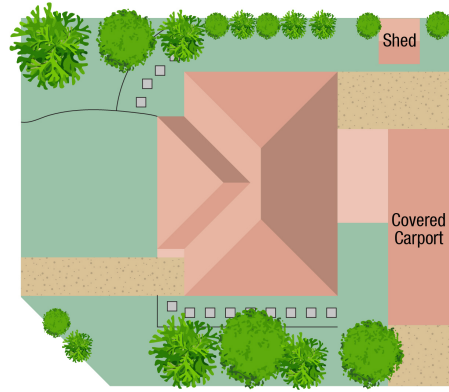
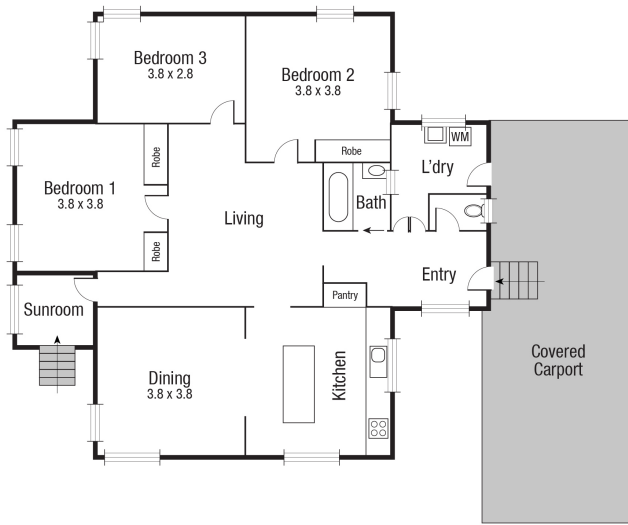


Graham Lynham
0447 250 222



OFFICE

37Thuringowa Drive, Kirwan
07 4723 3222



Scale in metres. Indicative only. Dimensions are approximate. All information contained herein is gathered from sources we believe to be reliable. However we cannot guarantee its accuracy and interested persons should rely on their own enquiries.

TOTAL : 113.3 sq.m

16 Welsh St