



15 Marquise Circuit BURDELL QLD

4 🏠 2 🚗 2 🚗

Sold by Shelly and Graham Lynham

Live the dream in this contemporary home in family focused Northshore. Sleek and elegant throughout the home offers quality craftsmanship and a well designed functional layout. The gourmet kitchen overlooks an open plan living/dining area which leads out onto an alfresco area.

Type : House
Price : \$ 345,000
Land Size : 572 sqm
View : <https://www.lynham.com.au/4675856>

THE PROPERTY

- Four bedrooms
- Main bedroom with walk in robe
- Second bedroom has walk in robe
- Air conditioned throughout with Split systems
- Gourmet kitchen with ample storage
- Stainless steel appliances



Shelly Lynham
07 4723 3222

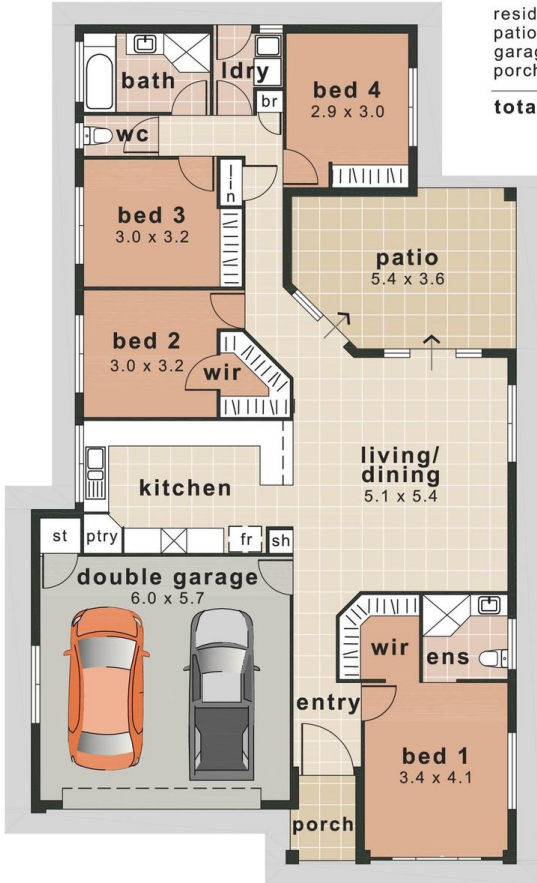


Graham Lynham
07 4723 3222

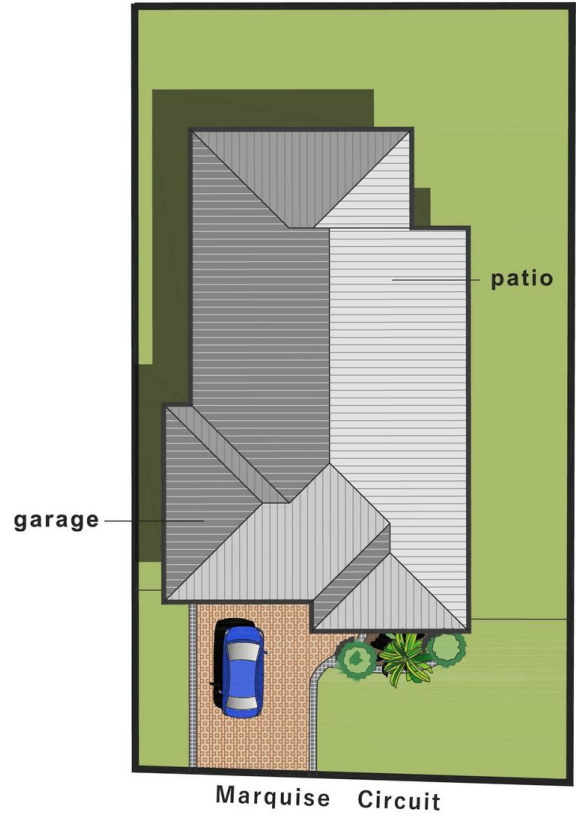
THE LOCATION

- Within minutes to Saint Clare's Catholic Primary School
- Within minutes to Northshore Shopping Precinct
- Within minutes to Waterparks

[For full version visit the website](https://www.lynham.com.au)



residence	138m ²
patio	18m ²
garage	36m ²
porch	3m ²
total	195m²



Marquise Circuit

FLOORPLAN
solutions

This illustration is indicative only and whilst care has been taken to produce an accurate representation, interested parties should undertake their own investigations **real estate plans** 0409546939