



PRICE GUIDE: \$338,000.00

Area: 740 m2

Sold By Nathan Lynham 0427695162

Comfortably nestled in the boutique Montana Estate in popular Mt Louisa this family home is bright and modern with large proportions throughout.

With a stunning open plan design boasting two large living areas, high ceilings and a large kitchen - it will fit your family perfectly.

THE PROPERTY

- Four carpeted bedrooms with built-in wardrobes
- Main bedroom is complimented by a large ensuite with double vanities & double shower plus a walk-in wardrobe
- Open plan kitchen featuring great storage and quality fittings and fixtures
- Combined dining & lounge room with direct access to the rear patio
- Formal lounge room to the front of the home.
- Internal Laundry
- 740sqm allotment
- Double remote garage; with convenient internal access
- Walking distance to parkland children's pl



Nathan Lynham
0427 695 162



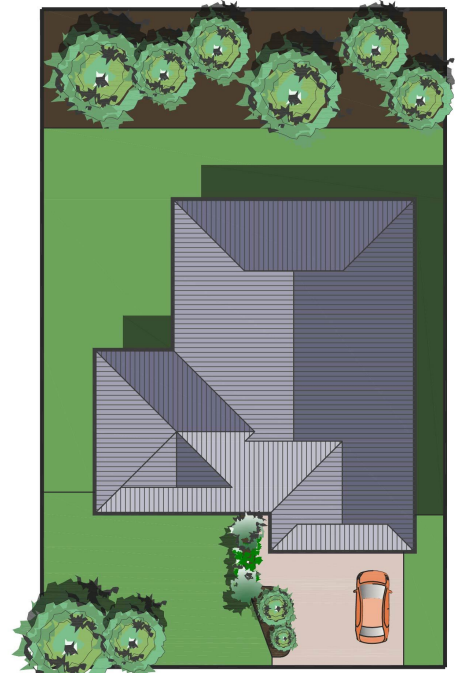
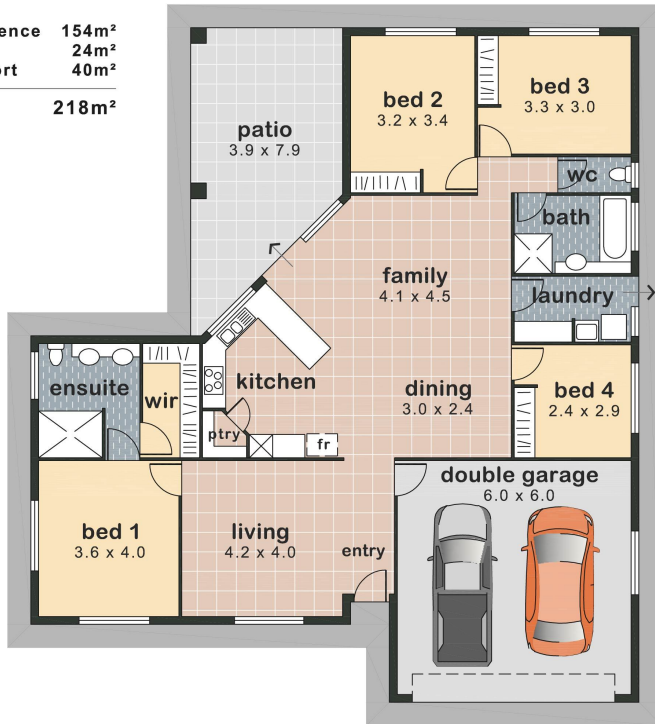
Graham Lynham
0447 250 222



OFFICE

37Thuringowa Drive, Kirwan
07 4723 3222

residence 154m²
 patio 24m²
 carport 40m²
total 218m²



Stoneville Circuit

This illustration is indicative only. Whilst care has been taken to produce an accurate representation, interested parties should undertake their own investigations