



**PRICE GUIDE:** \$260,000.00

Area: 776 m2

### Quality family home in quiet court

Equally appealing to first home buyers, downsizers or investors, this well presented low set home reveals a practical floor plan and enjoys all the ease of single level living. It is conveniently located in an established estate, close to all amenities.

#### THE PROPERTY

- 3 bedrooms all with built-in wardrobes
- Large 40sqm multi-use room - ideal for teenagers or young adults
- 2 large bathrooms
- Combined living and dining areas
- Separate family room
- Modern Galley style kitchen with ample storage
- Fully air conditioned; ceiling fans throughout
- Large patio overlooking the in-ground pool
- Solar hot water
- Fully landscaped in a quiet cul-de-sac
- Easy access to the Ring Road for access to



**Nathan Lynham**  
0427 695 162

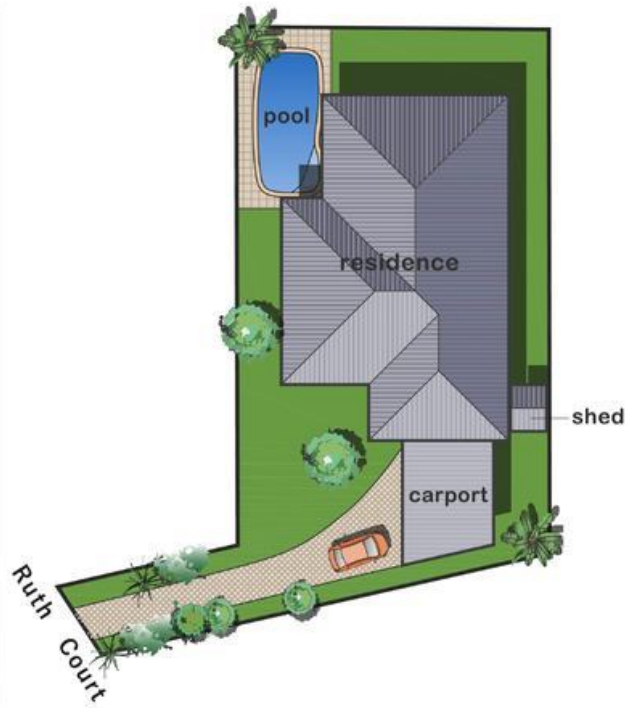
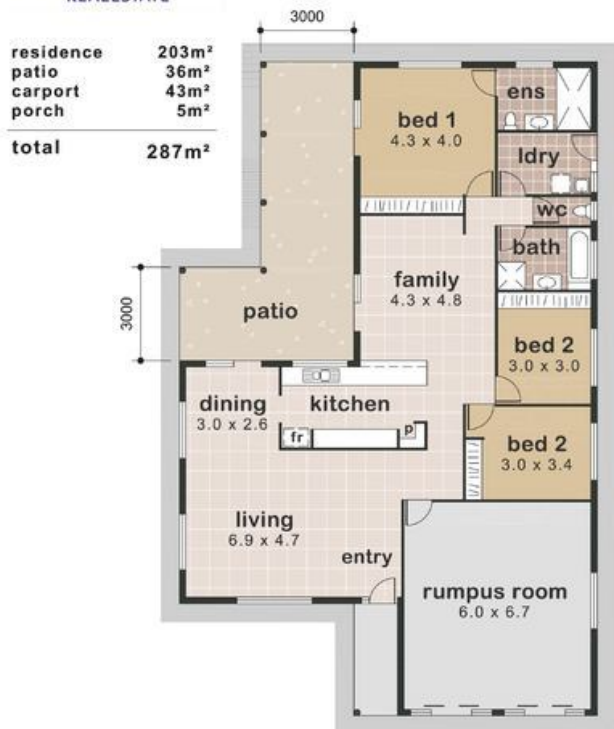


**Graham Lynham**  
0447 250 222



**OFFICE**

37Thuringowa Drive, Kirwan  
**07 4723 3222**



**FLOORPLAN**  
solutions  
0409546939  
real estate plans

This illustration is indicative only. Whilst care has been taken to produce an accurate representation, interested parties should undertake their own investigations