



PRICE GUIDE: \$105,000.00

Renovated Unit Centrally Located In West End

Positioned in the central heart of West End, Townsville and with fantastic convenience, this tastefully renovated, functional unit offers an enviable lifestyle.

Peacefully positioned at the rear of a small unit block this lovely unit provides a lifestyle of utmost convenience and privacy.

THE PROPERTY

- 2 Good size bedrooms with built-in wardrobes
- Open plan living/dining area
- Renovated kitchen
- Renovated bathroom
- Fully air conditioned
- Separate laundry
- Complex parking
- Rearl Balcony
- Quiet, friendly complex

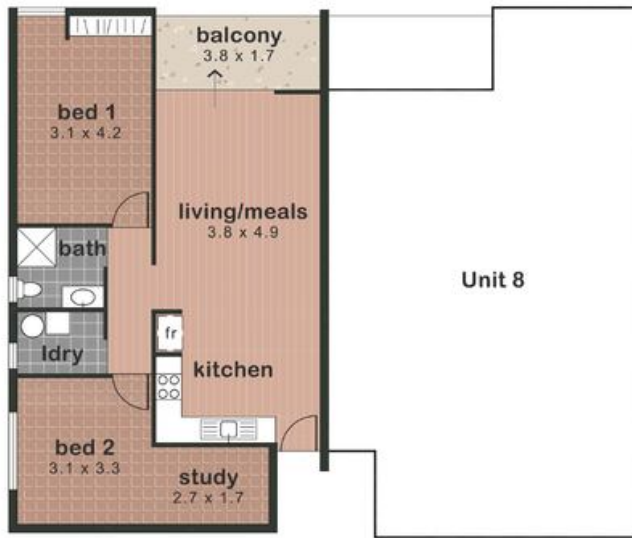


Nathan Lynham
0427 695 162

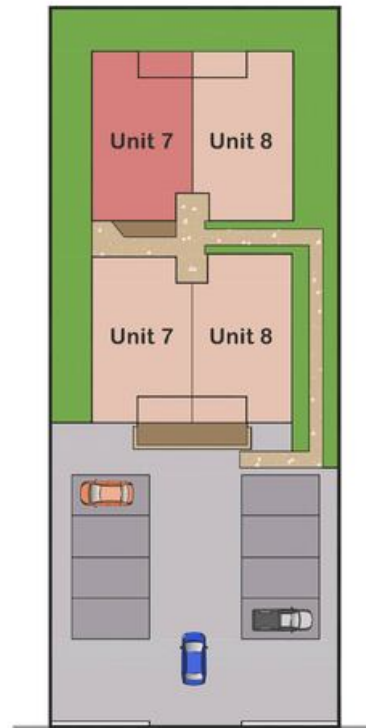


OFFICE

37Thuringowa Drive, Kirwan
07 4723 3222



| | |
|---------------|------------------------|
| Unit 7 | |
| residence | 78m ² |
| balcony | 6m ² |
| total | 84m² |



Ralston Street

FLOORPLAN
solutions
0409246539
real estate plans

Note: Illustration & sizing are indicative only. Care has been taken to produce an accurate representation, however interested parties should undertake their own investigation.