



PRICE GUIDE: \$570,000.00

Area: 955 m2

Contemporary Family Home

With a timeless style, and a commitment to quality this striking home offers an easy everyday elegance with a generously proportioned floor plan and premium inclusions. With sweeping open plan living, kitchen and dining areas that flow to the large entertainers patio, huge backyard and inground pool it suits the most discerning buyers and largest of families.

****Please watch the video - it is an actual video not just still photos****

THE PROPERTY

- Large 300sqm home
- Huge 4 bedroom layout
- Three living areas in total (family room, theatre room and kids retreat)
- Large master bedroom with stunning private ensuite and WIR
- Ensuite has floor to ceiling tiles, double vanity, huge double shower and separate toilet
- Expansive open plan living dining area
- Study
- Inground pool with waterfall and Balinese

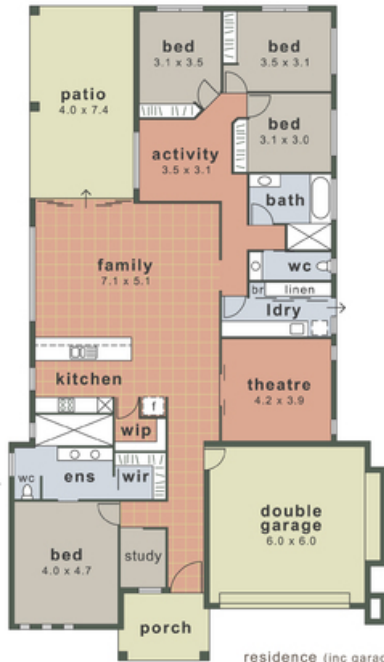


Shelly Lynham
0414 250 166



OFFICE

37Thuringowa Drive, Kirwan
07 4723 3222



residence (inc garage) 262m²
 patio & porch 38m²
total area 300m²

