



**PRICE GUIDE:** \$400,000.00

Area: 874 m2

## "The Queenslander"

Enjoy the charm of yesteryear and discover the appeal of the quintessential Queenslander? in this fully renovated highset home in one of Townsville's most loved suburbs, Belgian Gardens.

Located a short drive from Rowes Bay, Kissing Point, Jezzine Barracks and The Strand, the home which is set on a generous 874 m2 fully fenced allotment, sits quietly away from prying eyes.

It's only when you enter through the front gates does the owners passion and commitment become truly apparent with a renovation to rival any we have seen.

Committed to retaining the homes heritage, casement windows adorn the exterior and let natural light shine on the polished timber floors.

The fully air-conditioned home has a large open plan dining and lounge, which open onto a deck, which in turn over looks the back yard



**Shelly Lynham**  
0414 250 166



**Graham Lynham**  
0447 250 222

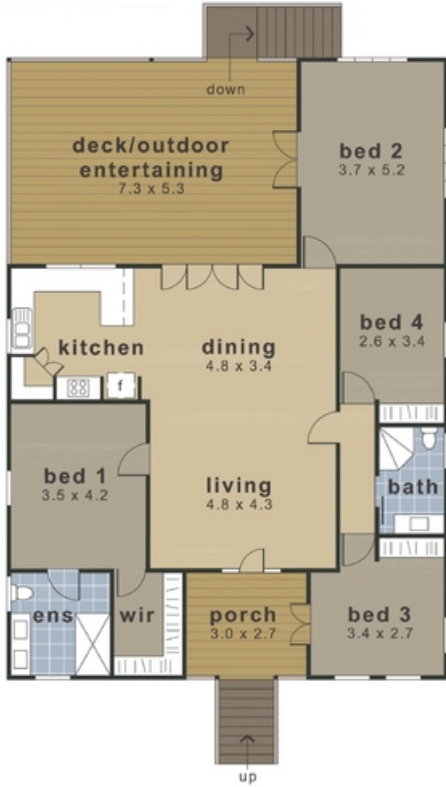


**OFFICE**

37Thuringowa Drive, Kirwan  
**07 4723 3222**

**109 Bundock Street | Belgian Gardens**

This illustration is indicative only and whilst care has been taken to produce an accurate representation, interested parties should undertake their own investigations



residence	133m <sup>2</sup>
deck	39m <sup>2</sup>
porch	8m <sup>2</sup>
<b>total area</b>	<b>180m<sup>2</sup></b>

