



**Graham Lynham**  
REAL ESTATE



**Graham Lynham**  
REAL ESTATE



**Graham Lynham**  
REAL ESTATE



**Graham Lynham**  
REAL ESTATE



**PRICE GUIDE:** \$310,000.00

Area: 579 m2

## The Perfect Family Fit

Having undergone a stunning renovation of unquestionable quality this home easily sets itself apart from others on the market.

Unlike most highset homes of its kind this property features two bathrooms (private ensuite to main). The renovation has also been completed to the highest of standards with the entire inside being brand new. Designed with usability in mind the modern kitchen features modern appliances, lots of storage (extra draws) and bench space.

Polished timber floors feature throughout the entire home, all bedrooms have built in robes. Downstairs is fully built in with extra rooms, a laundry and single lock up carport - it would suit a teenager perfectly.

Full features include:

- Beautiful polished timber floors throughout
- Very modern, professionally finished kitchen
- Large open plan living area
- Both bathrooms are brand new with floor to

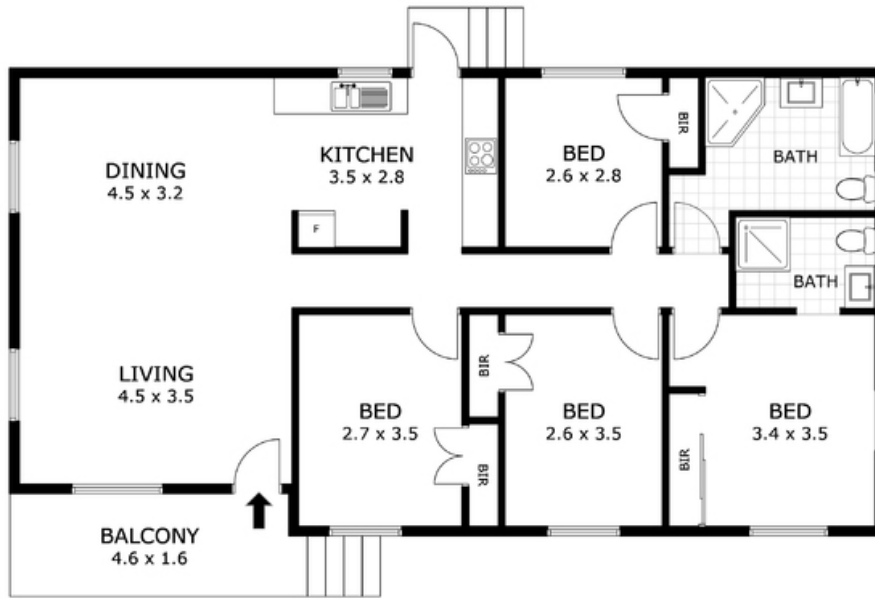


**Shelly Lynham**  
0414 250 166

**Graham Lynham**  
REAL ESTATE

**OFFICE**

37Thuringowa Drive, Kirwan  
**07 4723 3222**



Scale in metres. Indicative only. Dimensions are approximate. All information contained herein is gathered from sources we believe to be reliable. However we cannot guarantee its accuracy and interested parties should rely on their own enquiries.

Residence	- 108 m <sup>2</sup>
Balcony	- 8 m <sup>2</sup>
<b>Total</b>	<b>- 116 m<sup>2</sup></b>

## 16 Davies Street, Mt Louisa